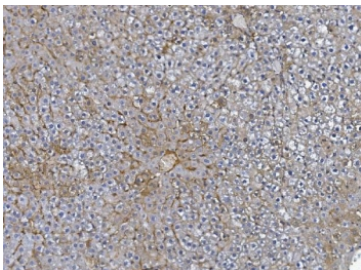


## Afm Antibody / Afamin (RQ5793)

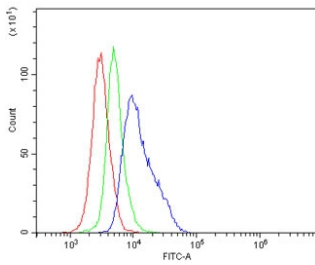
Catalog No.	Formulation	Size
RQ5793	0.5mg/ml if reconstituted with 0.2ml sterile DI water	100 ug

[Bulk quote request](#)

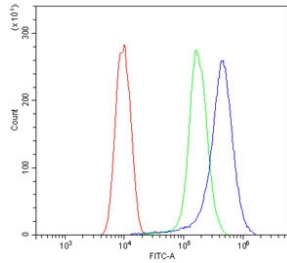
<b>Availability</b>	1-3 business days
<b>Species Reactivity</b>	Mouse, Rat
<b>Format</b>	Antigen affinity purified
<b>Host</b>	Rabbit
<b>Clonality</b>	Polyclonal (rabbit origin)
<b>Isotype</b>	Rabbit IgG
<b>Purity</b>	Affinity purified
<b>Buffer</b>	Lyophilized from 1X PBS with 2% Trehalose and 0.025% sodium azide
<b>UniProt</b>	O89020
<b>Applications</b>	Western Blot : 0.5-1ug/ml Immunohistochemistry : 1-2ug/ml Flow Cytometry : 1-3ug/million cells Direct ELISA : 0.1-0.5ug/ml
<b>Limitations</b>	This Afm antibody is available for research use only.



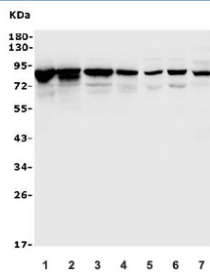
IHC staining of FFPE rat liver with Afm antibody. HIER: boil tissue sections in pH8 EDTA for 20 min and allow to cool before testing.



Flow cytometry testing of mouse spleen cells with Afm antibody at 1ug/million cells (blocked with goat sera); Red=cells alone, Green=isotype control, Blue= Afm antibody.



Flow cytometry testing of mouse HEPA1-6 cells with Afm antibody at 1ug/million cells (blocked with goat sera); Red=cells alone, Green=isotype control, Blue= Afm antibody.



Western blot testing of rat 1) heart, 2) liver, 3) kidney, 4) spleen and mouse 5) spleen, 6) thymus and 7) ANA-1 lysate with Afm antibody. Predicted molecular weight: ~69/87 kDa (unmodified/glycosylated).

## Description

Afamin is a protein that in humans is encoded by the AFM gene. This gene is a member of the albumin gene family, which is comprised of four genes that localize to chromosome 4 in a tandem arrangement. These four genes encode structurally-related serum transport proteins that are known to be evolutionarily related. The protein encoded by this gene is regulated developmentally, expressed in the liver and secreted into the bloodstream.

## Application Notes

Optimal dilution of the Afm antibody should be determined by the researcher.

## Immunogen

Recombinant mouse protein (amino acids D40-K596) was used as the immunogen for the Afm antibody.

## Storage

After reconstitution, the Afm antibody can be stored for up to one month at 4oC. For long-term, aliquot and store at -20oC. Avoid repeated freezing and thawing.

