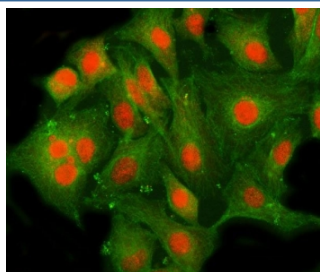


AF10 Antibody / MLLT10 (RQ8522)

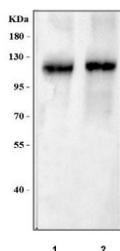
| Catalog No. | Formulation | Size |
|-------------|---|--------|
| RQ8522 | 0.5mg/ml if reconstituted with 0.2ml sterile DI water | 100 ug |

Bulk quote request

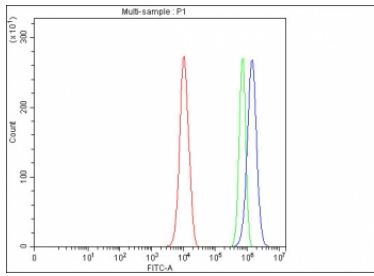
| | |
|---------------------------|--|
| Availability | 1-3 days |
| Species Reactivity | Human, Mouse, Rat |
| Format | Antigen affinity purified |
| Clonality | Polyclonal (rabbit origin) |
| Isotype | Rabbit IgG |
| Purity | Antigen affinity purified |
| Buffer | Lyophilized from 1X PBS with 2% Trehalose |
| UniProt | P55197 |
| Applications | Western Blot : 0.5-1ug/ml Immunofluorescence : 5ug/ml Flow Cytometry : 1-3ug/million cells ELISA : 0.1-0.5ug/ml |
| Limitations | This AF10 antibody is available for research use only. |



Immunofluorescent staining of FFPE human A549 cells with AF10 antibody (red) and Beta Tubulin mAb (green). HIER: steam section in pH6 citrate buffer for 20 min.



Western blot testing of 1) rat testis and 2) mouse testis tissue lysate with AF10 antibody. Predicted molecular weight ~113 kDa.



Flow cytometry testing of fixed and permeabilized human PC-3 cells with AF10 antibody at 1ug/million cells (blocked with goat sera); Red=cells alone, Green=isotype control, Blue= AF10 antibody.

Description

Protein AF-10 is a protein that in humans is encoded by the MLLT10 gene. This gene encodes a transcription factor and has been identified as a partner gene involved in several chromosomal rearrangements resulting in various leukemias. Multiple transcript variants encoding different isoforms have been found for this gene.

Application Notes

Optimal dilution of the AF10 antibody should be determined by the researcher.

Immunogen

An E.coli-derived human recombinant protein (amino acids E541-S1068) was used as the immunogen for the AF10 antibody.

Storage

After reconstitution, the AF10 antibody can be stored for up to one month at 4oC. For long-term, aliquot and store at -20oC. Avoid repeated freezing and thawing.