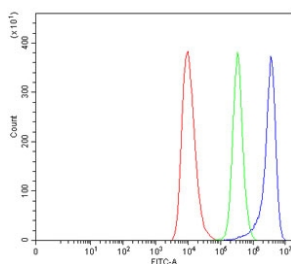


ADRA2A Antibody / Alpha 2a Adrenergic Receptor (RQ7418)

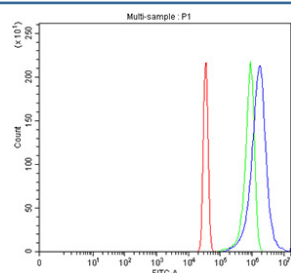
Catalog No.	Formulation	Size
RQ7418	0.5mg/ml if reconstituted with 0.2ml sterile DI water	100 ug

Bulk quote request

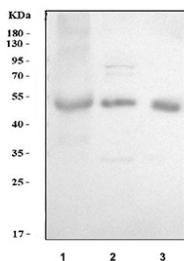
Availability	1-3 business days
Species Reactivity	Human, Mouse, Rat
Format	Antigen affinity purified
Clonality	Polyclonal (rabbit origin)
Isotype	Rabbit IgG
Purity	Antigen affinity purified
Buffer	Lyophilized from 1X PBS with 2% Trehalose
UniProt	P08913
Applications	Western Blot : 0.5-1ug/ml Flow Cytometry : 1-3ug/million cells Direct ELISA : 0.1-0.5ug/ml
Limitations	This ADRA2A antibody is available for research use only.



Flow cytometry testing of fixed and permeabilized human HEL cells with ADRA2A antibody at 1ug/million cells (blocked with goat sera); Red=cells alone, Green=isotype control, Blue= ADRA2A antibody.



Flow cytometry testing of fixed and permeabilized human HeLa cells with ADRA2A antibody at 1ug/million cells (blocked with goat sera); Red=cells alone, Green=isotype control, Blue= ADRA2A antibody.



Western blot testing of 1) human placenta, 2) rat brain and 3) mouse brain tissue with ADRA2A antibody. Predicted molecular weight ~49 kDa.

Description

ADRA2A (Alpha-2a Adrenergic Receptor) is a G protein-coupled receptor that regulates neurotransmitter release and sympathetic nervous system activity. It functions primarily as an inhibitory receptor, decreasing cyclic AMP levels upon activation and modulating processes such as vascular tone, platelet aggregation, and insulin secretion.

ADRA2A is widely expressed in the central and peripheral nervous systems, as well as in platelets, pancreatic islets, and vascular smooth muscle. Dysregulation of ADRA2A signaling has been associated with hypertension, diabetes, and neuropsychiatric conditions, making it an important target in cardiovascular and neurological research.

Using a high-quality ADRA2A antibody enables reliable detection in applications such as western blot, immunohistochemistry, and flow cytometry. An ADRA2A antibody from NSJ Bioreagents provides sensitivity and reproducibility for studies in neurotransmission, cardiovascular regulation, and endocrine signaling. Selecting the right ADRA2A antibody is essential for achieving accurate and consistent results.

Application Notes

Optimal dilution of the ADRA2A antibody should be determined by the researcher.

Immunogen

E. coli-derived recombinant human protein (amino acids M16-V465) was used as the immunogen for the ADRA2A antibody.

Storage

After reconstitution, the ADRA2A antibody can be stored for up to one month at 4°C. For long-term, aliquot and store at -20°C. Avoid repeated freezing and thawing.