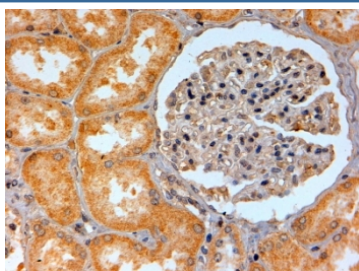


ADORA2B Antibody (R33306)

Catalog No.	Formulation	Size
R33306-100UG	0.5 mg/ml in 1X TBS, pH7.3, with 0.5% BSA (US sourced) and 0.02% sodium azide	100 ug

[Bulk quote request](#)

Availability	1-3 business days
Species Reactivity	Human
Format	Antigen affinity purified
Host	Goat
Clonality	Polyclonal (goat origin)
Isotype	Goat Ig
Purity	Antigen affinity
Gene ID	136
Applications	Immunohistochemistry (FFPE) : 2-4ug/ml ELISA (peptide) LOD : 1:64000
Limitations	This ADORA2B antibody is available for research use only.



IHC testing of FFPE human kidney with ADORA2B antibody at 2ug/ml. HIER: steamed with pH6 citrate buffer, HRP-staining.

Description

Additional name(s) for this target protein: Adenosine A2b receptor

Application Notes

Optimal dilution of the ADORA2B antibody should be determined by the researcher.

Immunogen

Amino acids CQADVKSNGQ were used as the immunogen for this ADORA2B antibody.

Storage

Aliquot and store the ADORA2B antibody at -20oC.