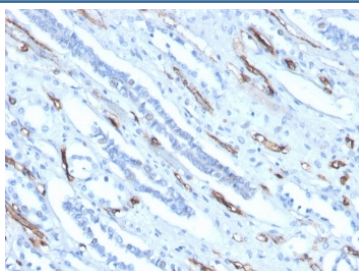


## Adiponectin Antibody [clone ADPN/4256] (V8692)

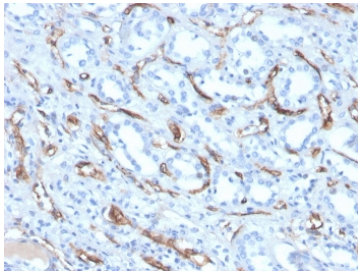
| Catalog No.    | Formulation  | Size   |
|----------------|--|--------|
| V8692-100UG    | 0.2 mg/ml in 1X PBS with 0.1 mg/ml BSA (US sourced) and 0.05% sodium azide | 100 ug |
| V8692-20UG     | 0.2 mg/ml in 1X PBS with 0.1 mg/ml BSA (US sourced) and 0.05% sodium azide | 20 ug  |
| V8692SAF-100UG | 1 mg/ml in 1X PBS; BSA free, sodium azide free                             | 100 ug |

[Bulk quote request](#)

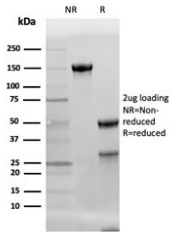
|                           |   |
|---------------------------|---|
| <b>Availability</b>       | 1-3 business days   |
| <b>Species Reactivity</b> | Human   |
| <b>Format</b>             | Purified  |
| <b>Host</b>               | Mouse   |
| <b>Clonality</b>          | Monoclonal (mouse origin)   |
| <b>Isotype</b>            | Mouse IgG1  |
| <b>Clone Name</b>         | ADPN/4256   |
| <b>Purity</b>             | Protein G affinity chromatography   |
| <b>UniProt</b>            | Q15848  |
| <b>Localization</b>       | Cytoplasmic & Cell surface  |
| <b>Applications</b>       | ELISA : order BSA-free format for coating*<br>Immunohistochemistry (FFPE) : 1-2ug/ml for 30 minutes at RT |
| <b>Limitations</b>        | This Adiponectin antibody is available for research use only.   |



IHC staining of FFPE human kidney with Adiponectin antibody (clone ADPN/4256).  
HIER: boil tissue sections in pH 9 10mM Tris with 1mM EDTA for 20 min and allow to cool before testing.



IHC staining of FFPE human kidney with Adiponectin antibody (clone ADPN/4256).  
HIER: boil tissue sections in pH 9 10mM Tris with 1mM EDTA for 20 min and allow to cool before testing.



SDS-PAGE analysis of purified, BSA-free Adiponectin antibody (clone ADPN/4256) as confirmation of integrity and purity.

## Description

This MAb reacts with adiponectin, an adipocytokine. Adipocytokines are hormones produced in adipose tissue. Adiponectin is abundantly present in plasma and has insulin like effect on glucose levels in the blood. Plasma adiponectin levels are low in insulin resistant patients who are obese, have diabetes mellitus type 2 or HIV-lipodystrophy. In women adiponectin levels tend to be higher than in men, which may be due to androgens suppressing adiponectin levels. Furthermore, adiponectin and leptin are both indicated in regulating body weight through direct action on the hypothalamus, influencing appetite. Obese people have low adiponectin levels while levels in anorexia patients are high. Adiponectin acts as ligand for various receptors, two of which have been identified, one probably involved in carbohydrate assimilation, the other in tuning the rate of metabolism. Clone ADPN/4256 is used to detect plasma adiponectin concentrations.

## Application Notes

Optimal dilution of the Adiponectin antibody should be determined by the researcher.

\*The ADPN/4256 mAb can also used in a combination ELISA with clone [ADPN/4255](#), acting as the capture antibody.

## Immunogen

A synthetic peptide corresponding to the tail region of the Adiponectin molecule was used as the immunogen for the Adiponectin antibody.

## Storage

Store the Adiponectin antibody at 2-8°C (with azide) or aliquot and store at -20°C or colder (without azide).

