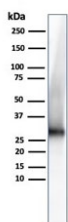


Adiponectin Antibody [clone ADPN/4255] (V8691)

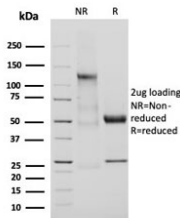
| Catalog No. | Formulation | Size |
|----------------|--|--------|
| V8691-100UG | 0.2 mg/ml in 1X PBS with 0.1 mg/ml BSA (US sourced) and 0.05% sodium azide | 100 ug |
| V8691-20UG | 0.2 mg/ml in 1X PBS with 0.1 mg/ml BSA (US sourced) and 0.05% sodium azide | 20 ug |
| V8691SAF-100UG | 1 mg/ml in 1X PBS; BSA free, sodium azide free | 100 ug |

[Bulk quote request](#)

| | |
|---------------------------|---|
| Availability | 1-3 business days |
| Species Reactivity | Human |
| Format | Purified |
| Host | Mouse |
| Clonality | Monoclonal (mouse origin) |
| Isotype | Mouse IgG1 |
| Clone Name | ADPN/4255 |
| Purity | Protein G affinity chromatography |
| UniProt | Q15848 |
| Localization | Cytoplasm and Cell surface |
| Applications | ELISA : order BSA-free format for coating* Western Blot : 1-2ug/ml |
| Limitations | This Adiponectin antibody is available for research use only. |



Western blot testing of human kidney lysate with Adiponectin antibody. Predicted molecular weight ~30 kDa.



SDS-PAGE analysis of purified, BSA-free Adiponectin antibody (clone ADPN/4255) as confirmation of integrity and purity.

Description

This MAbs reacts with adiponectin, an adipocytokine. Adipocytokines are hormones produced in adipose tissue. Adiponectin is abundantly present in plasma and has insulin like effect on glucose levels in the blood. Plasma adiponectin levels are low in insulin resistant patients who are obese, have diabetes mellitus type 2 or HIV-lipodystrophy. In women adiponectin levels tend to be higher than in men, which may be due to androgens suppressing adiponectin levels. Furthermore, adiponectin and leptin are both indicated in regulating body weight through direct action on the hypothalamus, influencing appetite. Obese people have low adiponectin levels while levels in anorexia patients are high. Adiponectin acts as ligand for various receptors, two of which have been identified, one probably involved in carbohydrate assimilation, the other in tuning the rate of metabolism. (Hotta K, et al.)

Application Notes

Optimal dilution of the Adiponectin antibody should be determined by the researcher.

*The ADPN/4255 mAb can be used in a combination ELISA with clone [ADPN/4256](#), acting as the detection antibody.

Immunogen

A synthetic peptide corresponding to the globular head region of the Adiponectin molecule was used as the immunogen for the Adiponectin antibody.

Storage

Store the Adiponectin antibody at 2-8°C (with azide) or aliquot and store at -20°C or colder (without azide).