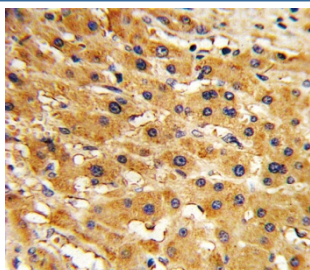


Adenine phosphoribosyltransferase Antibody / APRT (F54787)

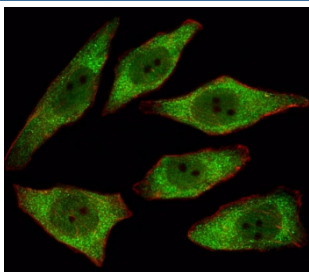
Catalog No.	Formulation	Size
F54787-0.4ML	In 1X PBS, pH 7.4, with 0.09% sodium azide	0.4 ml
F54787-0.08ML	In 1X PBS, pH 7.4, with 0.09% sodium azide	0.08 ml

Bulk quote request

Availability	1-3 business days
Species Reactivity	Human
Format	Purified
Clonality	Polyclonal (rabbit origin)
Isotype	Rabbit Ig
Purity	Antigen affinity purified
UniProt	P07741
Localization	Cytoplasmic, nuclear
Applications	Western Blot : 1:500-1:1000 Immunofluorescence : 1:25 Flow Cytometry : 1:25 (1x10 ⁶ cells) Immunohistochemistry (FFPE) : 1:25
Limitations	This Adenine phosphoribosyltransferase antibody is available for research use only.



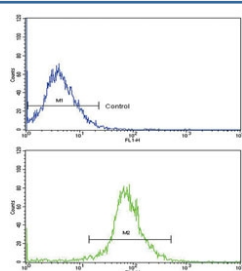
IHC testing of FFPE human hepatocellular carcinoma tissue with Adenine phosphoribosyltransferase antibody. HIER: steam section in pH6 citrate buffer for 20 min and allow to cool prior to staining.



Immunofluorescent staining of fixed and permeabilized human A549 cells with Adenine phosphoribosyltransferase antibody (green) and anti-Actin (red).



Western blot testing of human A2058 cell lysate with Adenine phosphoribosyltransferase antibody. Predicted molecular weight ~20 kDa.



Flow cytometry testing of human HepG2 cells with Adenine phosphoribosyltransferase antibody; Blue=isotype control, Green= Adenine phosphoribosyltransferase antibody.

Description

A conserved feature of APRT is the distribution of CpG dinucleotides. This enzyme catalyzes the formation of AMP and inorganic pyrophosphate from adenine and 5-phosphoribosyl-1-pyrophosphate (PRPP). It also produces adenine as a by-product of the polyamine biosynthesis pathway. A homozygous deficiency in this enzyme causes 2,8-dihydroxyadenine urolithiasis.

Application Notes

The stated application concentrations are suggested starting points. Titration of the Adenine phosphoribosyltransferase antibody may be required due to differences in protocols and secondary/substrate sensitivity.

Immunogen

A portion of amino acids 12-40 from the human protein was used as the immunogen for the Adenine phosphoribosyltransferase antibody.

Storage

Aliquot the Adenine phosphoribosyltransferase antibody and store frozen at -20°C or colder. Avoid repeated freeze-thaw cycles.

