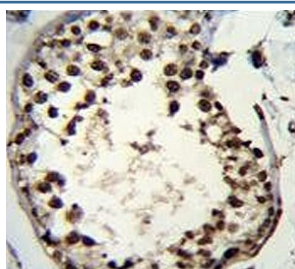


Additional sex combs-like protein 1 Antibody / ASXL1 (F54581)

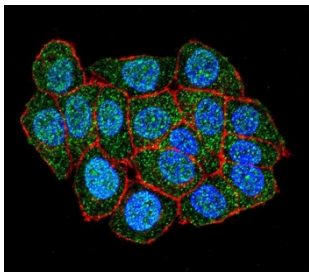
Catalog No.	Formulation	Size
F54581-0.4ML	In 1X PBS, pH 7.4, with 0.09% sodium azide	0.4 ml
F54581-0.08ML	In 1X PBS, pH 7.4, with 0.09% sodium azide	0.08 ml

[Bulk quote request](#)

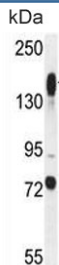
Availability	1-3 business days
Species Reactivity	Human, Mouse
Format	Purified
Clonality	Polyclonal (rabbit origin)
Isotype	Rabbit Ig
Purity	Antigen affinity purified
UniProt	Q8IXJ9
Localization	Nuclear
Applications	Western Blot : 1:500-1:2000 Immunohistochemistry (FFPE) : 1:25 Flow Cytometry : 1:25 (1x10 ⁶ cells) Immunofluorescence : 1:25
Limitations	This Additional sex combs-like protein 1 antibody is available for research use only.



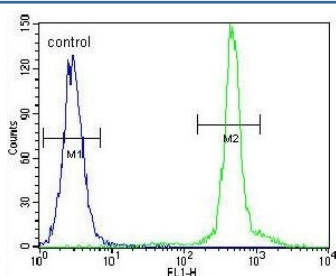
IHC testing of FFPE mouse testis tissue with Additional sex combs-like protein 1 antibody. HIER: steam section in pH6 citrate buffer for 20 min and allow to cool prior to staining.



Immunofluorescent staining of human HeLa cells with Additional sex combs-like protein 1 antibody (green), DAPI nuclear stain (blue) and anti-Actin (red).



Western blot testing of mouse liver tissue lysate with Additional sex combs-like protein 1 antibody. Predicted molecular weight ~165 kDa.



Flow cytometry testing of human HeLa cells with Additional sex combs-like protein 1 antibody; Blue=isotype control, Green= Additional sex combs-like protein 1 antibody.

Description

This gene is similar to the *Drosophila* additional sex combs gene, which encodes a chromatin-binding protein required for normal determination of segment identity in the developing embryo. The protein is a member of the Polycomb group of proteins, which are necessary for the maintenance of stable repression of homeotic and other loci. The protein is thought to disrupt chromatin in localized areas, enhancing transcription of certain genes while repressing the transcription of other genes. The protein encoded by this gene functions as a ligand-dependent co-activator for retinoic acid receptor in cooperation with nuclear receptor coactivator 1. Mutations in this gene are associated with myelodysplastic syndromes and chronic myelomonocytic leukemia. Alternative splicing results in multiple transcript variants.

Application Notes

The stated application concentrations are suggested starting points. Titration of the Additional sex combs-like protein 1 antibody may be required due to differences in protocols and secondary/substrate sensitivity.

Immunogen

A portion of amino acids 521-549 from the human protein was used as the immunogen for the Additional sex combs-like protein 1 antibody.

Storage

Aliquot the Additional sex combs-like protein 1 antibody and store frozen at -20°C or colder. Avoid repeated freeze-thaw cycles.

