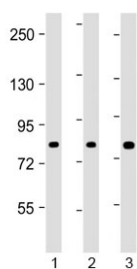


ADD1 Antibody / Alpha Adducin (Center Region) (F54144)

Catalog No.	Formulation	Size
F54144-0.2ML	In 1X PBS, pH 7.4, with 0.09% sodium azide	0.2 ml
F54144-0.05ML	In 1X PBS, pH 7.4, with 0.09% sodium azide	0.05 ml

[Bulk quote request](#)

Availability	1-3 business days
Species Reactivity	Human
Format	Antigen affinity purified
Host	Rabbit
Clonality	Polyclonal (rabbit origin)
Isotype	Rabbit Ig
Purity	Antigen affinity
UniProt	P35611
Applications	Western Blot : 1:1000-1:2000
Limitations	This ADD1 antibody is available for research use only.



Western blot testing of human 1) HEK293, 2) HT-29 and 3) U-2 OS cell lysate with ADD1 antibody at 1:2000. Predicted molecular weight ~81 kDa.

Description

Membrane-cytoskeleton-associated protein that promotes the assembly of the spectrin-actin network. Binds to calmodulin.

Application Notes

The stated application concentrations are suggested starting points. Titration of the ADD1 antibody may be required due to differences in protocols and secondary/substrate sensitivity.

Immunogen

A portion of amino acids 428-462 from human ADD1 was used as the immunogen for the ADD1 antibody.

Storage

Aliquot the ADD1 antibody and store frozen at -20oC or colder. Avoid repeated freeze-thaw cycles.