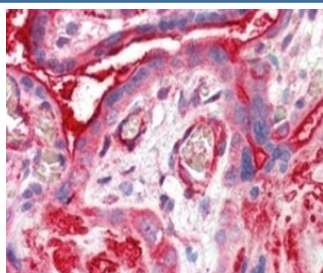


ADAP2 Antibody (R35679)

Catalog No.	Formulation	Size
R35679-100UG	0.5 mg/ml in 1X TBS, pH7.3, with 0.5% BSA (US sourced) and 0.02% sodium azide	100 ug

[Bulk quote request](#)

Availability	1-3 business days
Species Reactivity	Human
Format	Antigen affinity purified
Clonality	Polyclonal (goat origin)
Isotype	Goat Ig
Purity	Antigen affinity
Gene ID	55803
Applications	Immunohistochemistry (FFPE) : 5-10ug/ml ELISA (peptide) LOD : 1:32000
Limitations	This ADAP2 antibody is available for research use only.



IHC testing of FFPE human placenta with ADAP2 antibody at 5ug/ml. HIER: steamed with pH6 citrate buffer, AP-staining.

Description

Additional name(s) for this target protein: ArfGAP with dual PH domains 2, Centaurin alpha 2, CENTA2

Application Notes

Optimal dilution of the ADAP2 antibody should be determined by the researcher.

Immunogen

Amino acids RLTAESTESGRSSR were used as the immunogen for this ADAP2 antibody.

Storage

Aliquot and store the ADAP2 antibody at -20oC.