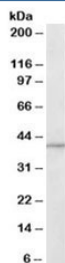


## ADAP1 Antibody (R35262)

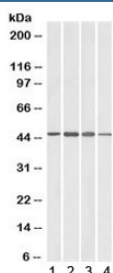
Catalog No.	Formulation	Size
R35262-100UG	0.5 mg/ml in 1X TBS, pH7.3, with 0.5% BSA (US sourced) and 0.02% sodium azide	100 ug

[Bulk quote request](#)

Availability	1-3 business days
Species Reactivity	Human, Mouse, Rat, Pig
Predicted Reactivity	Dog
Format	Antigen affinity purified
Host	Goat
Clonality	Polyclonal (goat origin)
Isotype	Goat Ig
Purity	Antigen affinity
Gene ID	11033
Applications	Western Blot : 1-3ug/ml ELISA (peptide) LOD : 1:32000
Limitations	This ADAP1 antibody is available for research use only.



Western blot testing of human brain lysate with ADAP1 antibody at 1ug/ml. Predicted molecular weight: ~43kDa.



Western blot testing of brain lysate from 1) human, 2) mouse, 3) rat and 4) pig with ADAP1 antibody at 1ug/ml. Predicted molecular weight: ~43kDa.

## Description

Additional name(s) for this target protein: ArfGAP with dual PH domains 1, Centaurin alpha 1, CENTA1

## Application Notes

Optimal dilution of the ADAP1 antibody should be determined by the researcher.

## Immunogen

Amino acids QEYAVEAHFKHKP were used as the immunogen for this ADAP1 antibody.

## Storage

Aliquot and store the ADAP1 antibody at -20oC.