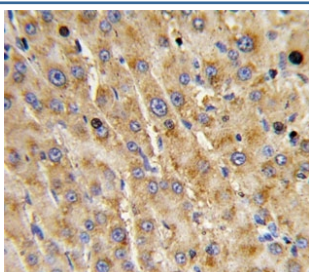


## ADAMTS13 Antibody (F50404)

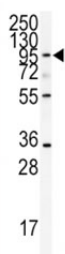
Catalog No.	Formulation	Size
F50404-0.4ML	In 1X PBS, pH 7.4, with 0.09% sodium azide	0.4 ml
F50404-0.08ML	In 1X PBS, pH 7.4, with 0.09% sodium azide	0.08 ml

[Bulk quote request](#)

<b>Availability</b>	1-3 business days
<b>Species Reactivity</b>	Human
<b>Format</b>	Antigen affinity purified
<b>Host</b>	Rabbit
<b>Clonality</b>	Polyclonal (rabbit origin)
<b>Isotype</b>	Rabbit Ig
<b>Purity</b>	Antigen affinity
<b>UniProt</b>	Q76LX8
<b>Localization</b>	Cytoplasmic
<b>Applications</b>	Western Blot : 1:1000 IHC (Paraffin) : 1:10-1:50
<b>Limitations</b>	This ADAMTS13 antibody is available for research use only.



IHC analysis of FFPE human hepatocarcinoma with ADAMTS13 antibody



Western blot analysis of ADAMTS13 antibody and CEM lysate.

## Description

ADAMTS13 is a member of the ADAMTS (a disintegrin and metalloproteinase with thrombospondin motif) protein family. Members of the family share several distinct protein modules, including a propeptide region, a metalloproteinase domain, a disintegrin-like domain, and a thrombospondin type 1 (TS) motif. Individual members of this family differ in the number of C-terminal TS motifs, and some have unique C-terminal domains. The enzyme is the von Willebrand Factor (vWF)-cleaving protease, which is responsible for cleaving at the site of Tyr842-Met843 of the vWF molecule. A deficiency of this enzyme is associated with thrombotic thrombocytopenic purpura.

## Application Notes

Titration of the ADAMTS13 antibody may be required due to differences in protocols and secondary/substrate sensitivity.

## Immunogen

A portion of amino acids 829-858 from the human protein was used as the immunogen for this ADAMTS13 antibody.

## Storage

Aliquot the ADAMTS13 antibody and store frozen at -20oC or colder. Avoid repeated freeze-thaw cycles.