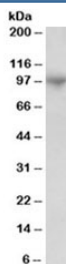


ADAM8 Antibody / MS2 (R35432)

Catalog No.	Formulation	Size
R35432-100UG	0.5 mg/ml in 1X TBS, pH7.3, with 0.5% BSA (US sourced) and 0.02% sodium azide	100 ug

[Bulk quote request](#)

Availability	1-3 business days
Species Reactivity	Human
Format	Antigen affinity purified
Clonality	Polyclonal (goat origin)
Isotype	Goat Ig
Purity	Antigen affinity
Gene ID	101
Applications	Western Blot : 1-3ug/ml ELISA (peptide) LOD : 1:16000
Limitations	This ADAM8 antibody is available for research use only.



Western blot testing of human bone marrow lysate with ADAM8 antibody at 1ug/ml.
Predicted molecular weight: ~89/79kDa (isoforms 1/3).

Description

Additional name(s) for this target protein: A disintegrin and metalloproteinase domain 8, CD156, cell surface antigen MS2

Application Notes

Optimal dilution of the ADAM8 antibody should be determined by the researcher.

1. This ADAM8 antibody is specific for isoforms 1 (824 AA, NP_001100.3) and 3 (733 AA, NP_001157962.1).

Immunogen

Amino acids QRKQGAGAPTAP were used as the immunogen for this ADAM8 antibody. (1)

Storage

Aliquot and store the ADAM8 antibody at -20oC.