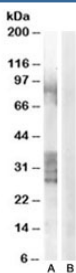


ADAM33 Antibody (R33315)

Catalog No.	Formulation	Size
R33315-100UG	0.5 mg/ml in 1X TBS, pH7.3, with 0.5% BSA (US sourced) and 0.02% sodium azide	100 ug

[Bulk quote request](#)

Availability	1-3 business days
Species Reactivity	Human
Format	Antigen affinity purified
Host	Goat
Clonality	Polyclonal (goat origin)
Isotype	Goat Ig
Purity	Antigen affinity
Gene ID	80332
Applications	Western Blot 0.3-1ug/ml : ELISA (peptide) LOD : 1:64000
Limitations	This ADAM33 antibody is available for research use only.



Western blot testing of human prostate lysate with ADAM33 antibody at 0.3ug/ml with [B] and without [A] immunizing peptide. Predicted molecular weight: ~88kDa but bands from 22-38kDa may also be visualized.

Description

Additional name(s) for this target protein: A disintegrin and metalloproteinase domain 33

Application Notes

Optimal dilution of the ADAM33 antibody should be determined by the researcher.

1. This ADAM33 antibody is specific to isoform alpha.

Immunogen

Amino acids CQSRRCRKNAFQEL were used as the immunogen for this ADAM33 antibody. (1)

Storage

Aliquot and store the ADAM33 antibody at -20oC.