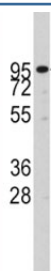


## ADAM17 Antibody (F44300)

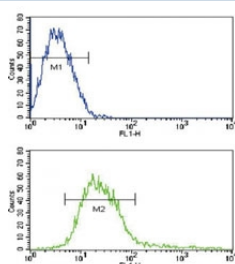
Catalog No.	Formulation	Size
F44300-0.4ML	In 1X PBS, pH 7.4, with 0.09% sodium azide	0.4 ml
F44300-0.08ML	In 1X PBS, pH 7.4, with 0.09% sodium azide	0.08 ml

**Bulk quote request**

<b>Availability</b>	1-3 business days
<b>Species Reactivity</b>	Human
<b>Format</b>	Antigen affinity purified
<b>Host</b>	Rabbit
<b>Clonality</b>	Polyclonal (rabbit origin)
<b>Isotype</b>	Rabbit Ig
<b>Purity</b>	Antigen affinity
<b>UniProt</b>	P78536
<b>Applications</b>	Western Blot : 1:1000 Flow Cytometry : 1:10-1:50
<b>Limitations</b>	This ADAM17 antibody is available for research use only.



Western blot analysis of ADAM17 antibody and CEM lysate. Expected molecular weight: 80-130KD depending on level of glycosylation



Flow cytometric analysis of CEM cells using ADAM17 antibody (green) compared to a [negative control](#) (blue). FITC-conjugated goat-anti-rabbit secondary Ab was used for the analysis.

## Description

ADAM17 is a member of the ADAM (a disintegrin and metalloprotease domain) family. Members of this family are membrane-anchored proteins structurally related to snake venom disintegrins, and have been implicated in a variety of biologic processes involving cell-cell and cell-matrix interactions, including fertilization, muscle development, and neurogenesis. ADAM17 functions as a tumor necrosis factor-alpha converting enzyme; binds mitotic arrest deficient 2 protein; and also plays a prominent role in the activation of the Notch signaling pathway.

## Application Notes

Titration of the ADAM17 antibody may be required due to differences in protocols and secondary/substrate sensitivity.

## Immunogen

A portion of amino acids 195-224 from the human protein was used as the immunogen for this ADAM17 antibody.

## Storage

Aliquot the ADAM17 antibody and store frozen at -20oC or colder. Avoid repeated freeze-thaw cycles.