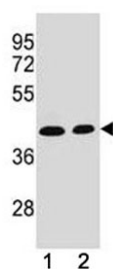


ADA Antibody [clone 608CT2.1.3] (F40390)

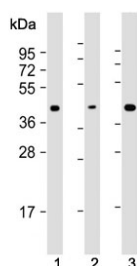
Catalog No.	Formulation	Size
F40390-0.4ML	In 1X PBS, pH 7.4, with 0.09% sodium azide	0.4 ml
F40390-0.08ML	In 1X PBS, pH 7.4, with 0.09% sodium azide	0.08 ml

[Bulk quote request](#)

Availability	1-3 business days
Species Reactivity	Human
Format	Purified
Clonality	Monoclonal (mouse origin)
Isotype	Mouse IgG1
Clone Name	608CT2.1.3
Purity	Protein G affinity
UniProt	P00813
Applications	Western Blot : 1:100-1:250
Limitations	This ADA antibody is available for research use only.



ADA antibody western blot analysis in (1) CEM and (2) Jurkat lysate. Expected/observed molecular weight ~41 kDa.



Western blot testing of human 1) Jurkat, 2) CEM and 3) MOLT4 cell lysate with ADA antibody. Expected molecular weight ~41 kDa.

Description

This gene encodes an enzyme that catalyzes the hydrolysis of adenosine to inosine. Various mutations have been described for this gene and have been linked to human diseases. Deficiency in this enzyme causes a form of severe combined immunodeficiency disease (SCID), in which there is dysfunction of both B and T lymphocytes with impaired cellular immunity and decreased production of immunoglobulins, whereas elevated levels of this enzyme have been associated with congenital hemolytic anemia.

Application Notes

Titration of the ADA antibody may be required due to differences in protocols and secondary/substrate sensitivity.

Immunogen

A portion of amino acids 287-314 from the human protein was used as the immunogen for this ADA antibody.

Storage

Aliquot the ADA antibody and store frozen at -20oC or colder. Avoid repeated freeze-thaw cycles.