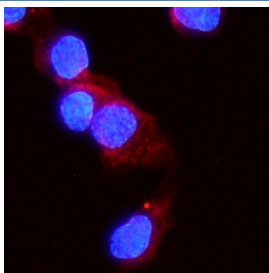


## ACVR2A Antibody (R32495)

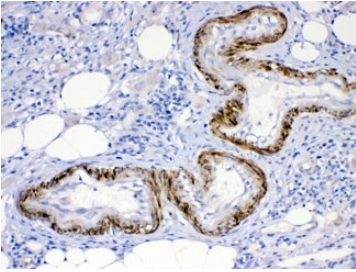
Catalog No.	Formulation	Size
R32495	0.5mg/ml if reconstituted with 0.2ml sterile DI water	100 ug

[Bulk quote request](#)

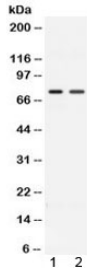
<b>Availability</b>	1-3 business days
<b>Species Reactivity</b>	Human, Mouse, Rat
<b>Format</b>	Antigen affinity purified
<b>Host</b>	Rabbit
<b>Clonality</b>	Polyclonal (rabbit origin)
<b>Isotype</b>	Rabbit IgG
<b>Purity</b>	Antigen affinity
<b>Buffer</b>	Lyophilized from 1X PBS with 2.5% BSA and 0.025% sodium azide
<b>UniProt</b>	P27037
<b>Localization</b>	Cytoplasmic, membranous
<b>Applications</b>	Western Blot : 0.5-1ug/ml Immunohistochemistry (FFPE) : 1-2ug/ml Immunofluorescence (FFPE) : 2-4ug/ml Flow Cytometry : 1-3ug/million cells
<b>Limitations</b>	This ACVR2A antibody is available for research use only.



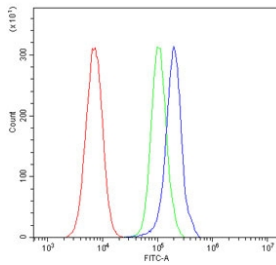
Immunofluorescent staining of FFPE rat NRK cells with ACVR2A antibody (red) and DAPI nuclear stain (blue). HIER: steam section in pH6 citrate buffer for 20 min.



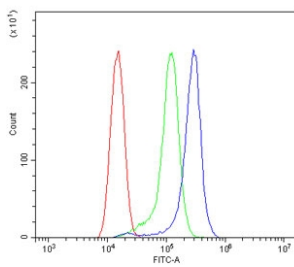
IHC testing of FFPE human intestinal cancer tissue with ACVR2A antibody at 1ug/ml. HIER: steam sections in pH6 citrate buffer for 20 min.



Western blot testing of 1) rat kidney and 2) human HeLa lysate with ACVR2A antibody at 0.5ug/ml. Predicted molecular weight ~58/70-80 kDa (unmodified/glycosylated).



Flow cytometry testing of mouse HEPA1-6 cells with ACVR2A antibody at 1ug/million cells (blocked with goat sera); Red=cells alone, Green=isotype control, Blue= ACVR2A antibody.



Flow cytometry testing of rat RH35 cells with ACVR2A antibody at 1ug/million cells (blocked with goat sera); Red=cells alone, Green=isotype control, Blue= ACVR2A antibody.

## Description

Activin receptor type-2A is a protein that in humans is encoded by the ACVR2A gene. ACVR2A is an activin type 2 receptor. This gene encodes a receptor that mediates the functions of activins, which are members of the transforming growth factor-beta (TGF-beta) superfamily involved in diverse biological processes. The encoded protein is a transmembrane serine-threonine kinase receptor which mediates signaling by forming heterodimeric complexes with various combinations of type I and type II receptors and ligands in a cell-specific manner. The encoded type II receptor is primarily involved in ligand-binding and includes an extracellular ligand-binding domain, a transmembrane domain and a cytoplasmic serine-threonine kinase domain. This gene may be associated with susceptibility to preeclampsia, a pregnancy-related disease which can result in maternal and fetal morbidity and mortality. Alternative splicing results in multiple transcript variants of this gene.

## Application Notes

Differences in protocols and secondary/substrate sensitivity may require the ACVR2A antibody to be titrated for optimal performance.

## Immunogen

Amino acids Q421-L513 from the human protein were used as the immunogen for the ACVR2A antibody.

## Storage

After reconstitution, the ACVR2A antibody can be stored for up to one month at 4°C. For long-term, aliquot and store at -20°C. Avoid repeated freezing and thawing.