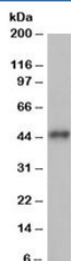


ACTR1B Antibody (R36355)

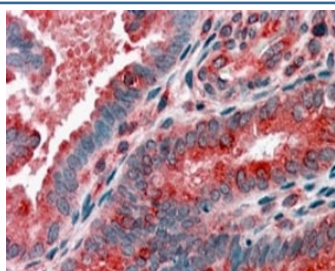
Catalog No.	Formulation	Size
R36355-100UG	0.5 mg/ml in 1X TBS, pH7.3, with 0.5% BSA (US sourced) and 0.02% sodium azide	100 ug

[Bulk quote request](#)

Availability	1-3 business days
Species Reactivity	Human
Predicted Reactivity	Cow, Dog, Mouse, Rat
Format	Antigen affinity purified
Clonality	Polyclonal (goat origin)
Isotype	Goat Ig
Purity	Antigen affinity
Gene ID	10120
Applications	Western Blot : 0.5-2ug/ml Immunohistochemistry (FFPE) : 3-5ug/ml ELISA (peptide) LOD : 1:128000
Limitations	This ACTR1B antibody is available for research use only.



Western blot testing of human heart lysate with ACTR1B antibody at 1ug/ml.
Predicted/observed molecular weight: ~45kDa.



IHC staining of FFPE human uterus with ACTR1B antibody at 4ug/ml. HIER: steamed with pH6 citrate buffer, AP-staining.

Description

Additional name(s) for this target protein: ARP1 actin-related protein 1B

Application Notes

Optimal dilution of the ACTR1B antibody should be determined by the researcher.

Immunogen

Amino acids YEEDGSRAIHRKT were used as the immunogen for this ACTR1B antibody.

Storage

Aliquot and store the ACTR1B antibody at -20oC.