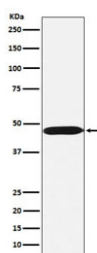


ACTL6A Antibody [clone AFCF-1] (RQ4828)

Catalog No.	Formulation	Size
RQ4828	Antibody in PBS with 0.02% sodium azide, 50% glycerol and 0.4-0.5mg/ml BSA	100 ul

[Bulk quote request](#)

Availability	1-2 weeks
Species Reactivity	Human
Format	Purified
Clonality	Rabbit Monoclonal
Isotype	Rabbit IgG
Clone Name	AFCF-1
Purity	Affinity purified
UniProt	O96019
Applications	Western Blot : 1:500-1:2000
Limitations	This ACTL6A antibody is available for research use only.



Western blot testing of human Ramos cell lysate with ACTL6A antibody. Expected molecular weight: 47-53 kDa.

Description

Actin-like protein 6A is involved in transcriptional activation and repression of select genes by chromatin remodeling (alteration of DNA-nucleosome topology). Required for maximal ATPase activity of SMARCA4/BRG1/BAF190A and for association of the SMARCA4/BRG1/BAF190A containing remodeling complex BAF with chromatin/nuclear matrix. [UniProt]

Application Notes

Optimal dilution of the ACTL6A antibody should be determined by the researcher.

Immunogen

A synthetic peptide specific to human ACTL6A was used as the immunogen for the ACTL6A antibody.

Storage

Store the ACTL6A antibody at -20oC.