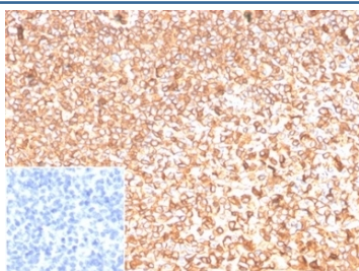


Actin Beta Antibody / ACTB [clone ACTB/1109] (V9727)

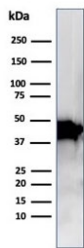
Catalog No.	Formulation	Size
V9727-100UG	0.2 mg/ml in 1X PBS with 0.1 mg/ml BSA (US sourced), 0.05% sodium azide	100 ug
V9727-20UG	0.2 mg/ml in 1X PBS with 0.1 mg/ml BSA (US sourced), 0.05% sodium azide	20 ug
V9727SAF-100UG	1 mg/ml in 1X PBS; BSA free, sodium azide free	100 ug

[Bulk quote request](#)

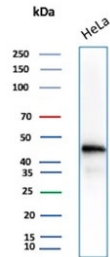
Availability	1-3 business days
Species Reactivity	Human, Mouse and Rat
Format	Purified
Host	Mouse
Clonality	Monoclonal (mouse origin)
Isotype	Mouse IgG1, kappa
Clone Name	ACTB/1109
Purity	Protein A/G affinity
UniProt	P60709
Localization	Cytoplasm
Applications	Flow Cytometry : 1-2ug/million cells Immunofluorescence : 1-2ug/ml Western Blot : 1-2ug/ml Immunohistochemistry (FFPE) : 1-2ug/ml
Limitations	This Actin Beta antibody is available for research use only.



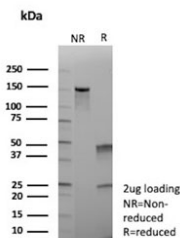
IHC staining of FFPE human tonsil tissue with Actin Beta antibody (clone ACTB/1109). Negative control inset: PBS used instead of primary antibody to control for secondary Ab binding. HIER: boil tissue sections in pH 9 10mM Tris with 1mM EDTA for 20 min and allow to cool before testing.



Western blot analysis of human Raji cell lysate using Actin Beta antibody (clone ACTB/1109). Predicted molecular weight ~42 kDa.



Western blot analysis of human HeLa cell lysate using Actin Beta antibody (clone ACTB/1109). Predicted molecular weight ~42 kDa.



SDS-PAGE analysis of purified, BSA-free Actin Beta antibody (clone ACTB/1109) as confirmation of integrity and purity.

Description

All eukaryotic cells express Actin, which often constitutes as much as 50% of total cellular protein. Actin filaments can form both stable and labile structures and are crucial components of microvilli and the contractile apparatus of muscle cells. While lower eukaryotes, such as yeast, have only one Actin gene, higher eukaryotes have several isoforms encoded by a family of genes. At least six types of Actin are present in mammalian tissues and fall into three classes. α -Actin expression is limited to various types of muscle, whereas β -Actin and γ -Actin are the principle constituents of filaments in other tissues. Members of the small GTPase family regulate the organization of the Actin cytoskeleton. Rho controls the assembly of Actin stress fibers and focal adhesion. Rac regulates Actin filament accumulation at the plasma membrane. Cdc42 stimulates formation of filopodia.

Application Notes

Optimal dilution of the Actin Beta antibody should be determined by the researcher.

Immunogen

Recombinant human protein was used as the immunogen for the Actin Beta antibody.

Storage

Aliquot the Actin Beta antibody and store frozen at -20°C or colder. Avoid repeated freeze-thaw cycles.

