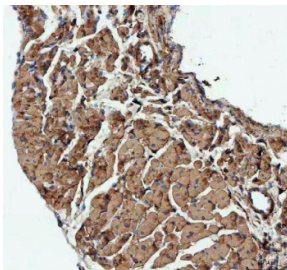


Actin Antibody / ACTA1 (R32165)

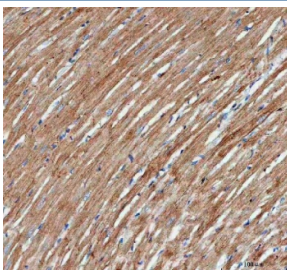
Catalog No.	Formulation	Size
R32165	0.5mg/ml if reconstituted with 0.2ml sterile DI water	100 ug

[Bulk quote request](#)

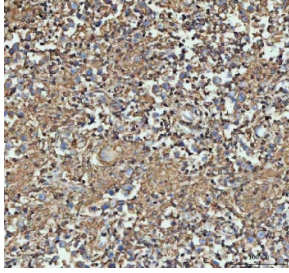
Availability	1-3 business days
Species Reactivity	Human, Mouse, Rat
Format	Antigen affinity purified
Host	Rabbit
Clonality	Polyclonal (rabbit origin)
Isotype	Rabbit IgG
Purity	Antigen affinity
Buffer	Lyophilized from 1X PBS with 2% Trehalose
UniProt	P68133
Localization	Cytoplasmic
Applications	Western Blot : 0.5-1ug/ml Immunohistochemistry (FFPE) : 2-5ug/ml
Limitations	This Actin antibody is available for research use only.



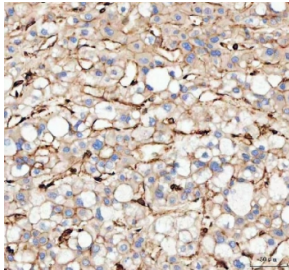
IHC staining of FFPE mouse heart tissue with Actin antibody. HIER: Boil the paraffin sections in pH8 EDTA buffer for 20 minutes and allow to cool prior to staining.



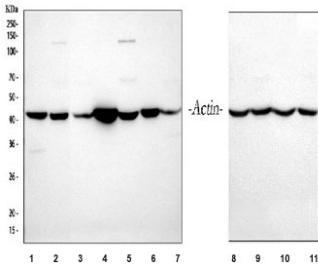
IHC staining of FFPE rat heart tissue with Actin antibody. HIER: Boil the paraffin sections in pH8 EDTA buffer for 20 minutes and allow to cool prior to staining.



IHC staining of FFPE human testicular germ cell tumor tissue with Actin antibody. HIER: Boil the paraffin sections in pH8 EDTA buffer for 20 minutes and allow to cool prior to staining.



IHC staining of FFPE human liver cancer tissue with Actin antibody. HIER: Boil the paraffin sections in pH8 EDTA buffer for 20 minutes and allow to cool prior to staining.



Western blot testing of 1) rat heart, 2) rat brain, 3) rat kidney, 4) mouse heart, 5) mouse brain, 6) mouse spleen, 7) mouse kidney, 8) human HeLa, 9) human HepG2, 10) human 293T and 11) human A431 cell lysate with Actin antibody. Expected molecular weight 42-45 kDa.

Description

Actin, a highly conserved protein, is a major component of both the cytoskeletal and contractile structures in the cell types. It varies in amount, being related to the type of differentiation and to the functional state of cells and tissues. The actins exhibit over 90% sequence homology, but each isoform has a unique NH₂-terminal sequence. The isoforms are comprised of three alpha-actin, one beta-actin, two gamma-actin.

Application Notes

Optimal dilution of the Actin antibody should be determined by the researcher.

Immunogen

Amino acids HETTYNSIMKCDIDIRKDLYANNVMSGGTTY of human Actin were used as the immunogen for the Actin antibody.

Storage

After reconstitution, the Actin antibody can be stored for up to one month at 4°C. For long-term, aliquot and store at -20°C. Avoid repeated freezing and thawing.

