

ACTH Antibody / Synacthen [clone AH26] (V2230)

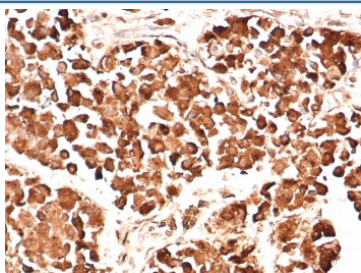
Catalog No.	Formulation	Size
V2230-100UG	0.2 mg/ml in 1X PBS with 0.1 mg/ml BSA (US sourced) and 0.05% sodium azide	100 ug
V2230-20UG	0.2 mg/ml in 1X PBS with 0.1 mg/ml BSA (US sourced) and 0.05% sodium azide	20 ug
V2230SAF-100UG	1 mg/ml in 1X PBS; BSA free, sodium azide free	100 ug



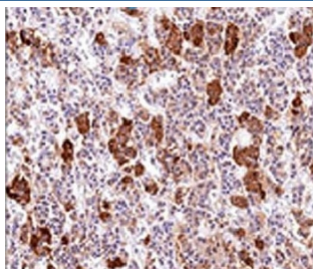
Citations (7)

[Bulk quote request](#)

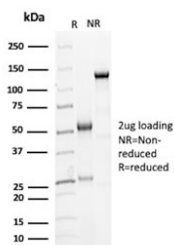
Species Reactivity	Human, Mouse, Rat
Format	Purified
Host	Mouse
Clonality	Monoclonal (mouse origin)
Isotype	Mouse IgG1, kappa
Clone Name	AH26
Purity	Protein G affinity chromatography
Buffer	1X PBS, pH 7.4
Gene ID	5443
Localization	Cytoplasmic
Applications	Immunohistochemistry (FFPE) : 0.5-1ug/ml for 30 min at RT
Limitations	This ACTH antibody is available for research use only.



IHC testing of FFPE human pituitary gland stained with ACTH antibody (clone AH26).
HIER: boil tissue sections in pH 9 10mM Tris with 1mM EDTA for 20 min and allow to cool before testing.



IHC testing of FFPE human pituitary gland stained with ACTH antibody (clone AH26).
HIER: boil tissue sections in pH 9 10mM Tris with 1mM EDTA for 20 min and allow to cool before testing.



SDS-PAGE analysis of purified, BSA-free ACTH antibody (clone AH26) as confirmation of integrity and purity.

Description

POMC (pro-opiomelanocortin or corticotropin-lipotropin) is a 267 amino acid polypeptide hormone precursor that goes through extensive, tissue-specific post-translational processing by convertases. POMC is cleaved into ten hormone chains named NPP, ACTH, alpha-MSH (Melanocyte Stimulating Hormone), beta-MSH, gamma-MSH, CLIP (corticotropin-like intermediary peptide), Lipotropin-beta, Lipotropin-gamma, beta-endorphin and Met-enkephalin. ACTH (also called Corticotropin) is a 39 amino acid active peptide produced by the anterior pituitary. Clone AH26 antibody is specific to Synacthen (aa 1-24 of ACTH) and does not react with CLIP (aa 17-39). ACTH is produced by cells of immune system (T-cells, B-cells, and macrophages) in response to stimuli associated with stress. Specific antibody is a useful marker in classification of pituitary tumors and the study of pituitary disease. It reacts with ACTH-producing cells (corticotrophs). It also may react with other tumors (e.g. some small cell carcinomas of the lung) that cause paraneoplastic syndromes by secreting ACTH.

Application Notes

The concentration stated for each application is a general starting point. Variations in protocols, secondaries and substrates may require the ACTH antibody to be titrated up or down for optimal performance.

Immunogen

A synthetic peptide corresponding to aa 1-24 of human ACTH was used as the immunogen for this ACTH antibody.

Storage

Store the ACTH antibody at 2-8°C (with azide) or aliquot and store at -20°C or colder (without azide).

References (1)