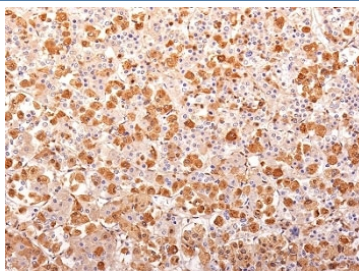


## ACTH Antibody Cocktail / Synacthen [clone AH26 + 57] (V3176)

Catalog No.	Formulation	Size
V3176-100UG	0.2 mg/ml in 1X PBS with 0.1 mg/ml BSA (US sourced) and 0.05% sodium azide	100 ug
V3176-20UG	0.2 mg/ml in 1X PBS with 0.1 mg/ml BSA (US sourced) and 0.05% sodium azide	20 ug
V3176SAF-100UG	1 mg/ml in 1X PBS; BSA free, sodium azide free	100 ug

[Bulk quote request](#)

<b>Availability</b>	1-3 business days
<b>Species Reactivity</b>	Human, Mouse, Rat
<b>Format</b>	Purified
<b>Host</b>	Mouse
<b>Clonality</b>	Monoclonal (mouse origin)
<b>Isotype</b>	Mouse IgG1 + IgG1
<b>Clone Name</b>	AH26 + 57
<b>Purity</b>	Protein G affinity chromatography
<b>UniProt</b>	P01189
<b>Localization</b>	Cytoplasm
<b>Applications</b>	Immunohistochemistry (FFPE) : 0.5-1ug/ml for 30 min at RT
<b>Limitations</b>	This ACTH antibody cocktail is available for research use only.



IHC: Formalin-fixed, paraffin-embedded human pituitary gland stained with ACTH antibody (AH26 + 57). Required HIER: boil tissue sections in 10mM Citrate Buffer, pH 6.0, for 10-20 min followed by cooling at RT for 20 minutes.

## Description

ACTH (same as Corticotropin) is a 39 amino acid active peptide produced by the anterior pituitary. This cocktail is specific to Synacthen (aa1-24 of ACTH); does not react with CLIP (aa17-39 of ACTH). POMC (pro-opiomelanocortin or corticotropin-lipotropin) is a 267 amino acid polypeptide hormone precursor that goes through extensive, tissue-specific posttranslational processing by convertases. POMC is cleaved into ten hormone chains named NPP, ACTH, alpha-MSH (Melanocyte Stimulating Hormone), beta-MSH, gamma-MSH, CLIP (corticotropin-like intermediary peptide), Lipotropin-beta, Lipotropin-gamma, beta-endorphin and Met-enkephalin. ACTH is also produced by cells of immune system (T-cells, B-cells, and macrophages) in response to stimuli associated with stress. Anti-ACTH is a useful marker in classification of pituitary tumors and the study of pituitary disease. It reacts with ACTH-producing cells (corticotrophs). It also may react with other tumors (e.g. some small cell carcinomas of the lung) causing paraneoplastic syndromes by secreting ACTH.

## Application Notes

The optimal dilution of the ACTH antibody for each application should be determined by the researcher.

## Immunogen

Amino acids 1-24 (AH26) and an N-terminal peptide from human ACTH (57) were used as the immunogens for this ACTH antibody cocktail.

## Storage

Store the ACTH antibody cocktail at 2-8oC (with azide) or aliquot and store at -20oC or colder (without azide).