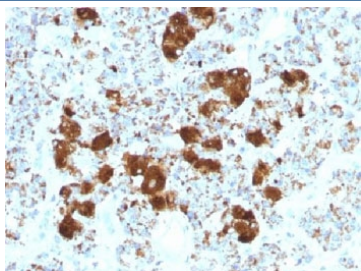


## ACTH Antibody / CLIP [clone SPM501] (V3191)

Catalog No.	Formulation	Size
V3191-100UG	0.2 mg/ml in 1X PBS with 0.1 mg/ml BSA (US sourced) and 0.05% sodium azide	100 ug
V3191-20UG	0.2 mg/ml in 1X PBS with 0.1 mg/ml BSA (US sourced) and 0.05% sodium azide	20 ug
V3191SAF-100UG	1 mg/ml in 1X PBS; BSA free, sodium azide free	100 ug

[Bulk quote request](#)

<b>Species Reactivity</b>	Human
<b>Format</b>	Purified
<b>Host</b>	Mouse
<b>Clonality</b>	Monoclonal (mouse origin)
<b>Isotype</b>	Mouse IgG1, kappa
<b>Clone Name</b>	SPM501
<b>Purity</b>	Protein G affinity chromatography
<b>Buffer</b>	1X PBS, pH 7.4
<b>Gene ID</b>	5443
<b>Localization</b>	Cytoplasmic
<b>Applications</b>	Immunohistochemistry (FFPE) : 1-2ug/ml for 30 min at RT
<b>Limitations</b>	This ACTH antibody is available for research use only.



IHC testing of FFPE human pituitary gland with ACTH antibody (clone SPM501).  
Required HIER: steam sections in pH 9 10mM Tris with 1mM EDTA for 10-20 min.

## Description

ACTH (or Corticotropin) is a 39 amino acid active peptide produced by the anterior pituitary. This mAb is specific to CLIP (aa 25-39) and does not react with Synacthen (aa 1-24). POMC (pro-opiomelanocortin or corticotropin-lipotropin) is a 267 amino acid polypeptide hormone precursor that goes through extensive, tissue-specific posttranslational processing by convertases. POMC is cleaved into ten hormone chains named NPP, ACTH, alpha-MSH (Melanocyte Stimulating Hormone), beta-MSH, gamma-MSH, CLIP (corticotropin-like intermediary peptide), Lipotropin-beta, Lipotropin-gamma, beta-endorphin and Met-enkephalin. ACTH is also produced by cells of immune system (T-cells, B-cells, and macrophages) in response to stimuli associated with stress. Anti-ACTH is a useful marker in classification of pituitary tumors and the study of pituitary disease. It reacts with ACTH-producing cells (corticotrophs). It also may react with other tumors (e.g. some small cell carcinomas of the lung) causing paraneoplastic syndromes by secreting ACTH.

## Application Notes

The concentration stated for each application is a general starting point. Variations in protocols, secondaries and substrates may require the ACTH antibody to be titrated up or down for optimal performance.

## Immunogen

Amino acids 25-39 (NGAEDESAEAFPLEF) of Adrenocorticotrophic hormone (CLIP sequence) were used as the immunogen for this ACTH antibody.

## Storage

Store the ACTH antibody at 2-8°C (with azide) or aliquot and store at -20°C or colder (without azide).

## References (1)