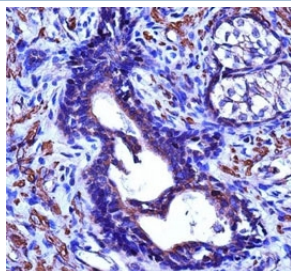


## ACTG2 Antibody (F43044)

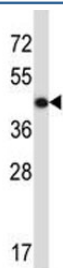
Catalog No.	Formulation	Size
F43044-0.4ML	Not currently available	0.4 ml
F43044-0.08ML	In 1X PBS, pH 7.4, with 0.09% sodium azide	0.08

[Bulk quote request](#)

<b>Availability</b>	1-3 business days
<b>Species Reactivity</b>	Human
<b>Predicted Reactivity</b>	Bovine, Chicken, Mouse, Rat
<b>Format</b>	Antigen affinity purified
<b>Clonality</b>	Polyclonal (rabbit origin)
<b>Isotype</b>	Rabbit Ig
<b>Purity</b>	Antigen affinity
<b>UniProt</b>	P63267
<b>Applications</b>	Western Blot : 1:1000 IHC (Paraffin) : 1:10-1:50
<b>Limitations</b>	This ACTG2 antibody is available for research use only.



ACTG2 antibody immunohistochemistry analysis in formalin fixed and paraffin embedded human prostate carcinoma.



ACTG2 antibody western blot analysis in CEM lysate

## Description

Actins are highly conserved proteins that are involved in various types of cell motility, and maintenance of the cytoskeleton. In vertebrates, three main groups of actin isoforms, alpha, beta and gamma have been identified. The alpha actins are found in muscle tissues and are a major constituent of the contractile apparatus. The beta and gamma actins co-exist in most cell types as components of the cytoskeleton, and as mediators of internal cell motility. Actin, gamma 2, encoded by this gene, is a smooth muscle actin found in enteric tissues.

## Application Notes

Titration of the ACTG2 antibody may be required due to differences in protocols and secondary/substrate sensitivity.

## Immunogen

A portion of amino acids 343-371 from the human protein was used as the immunogen for this ACTG2 antibody.

## Storage

Aliquot the ACTG2 antibody and store frozen at -20oC or colder. Avoid repeated freeze-thaw cycles.