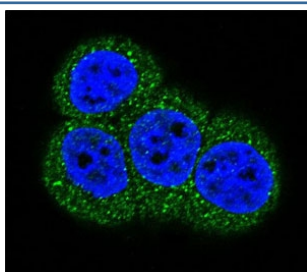


ACTC1 Antibody (F44293)

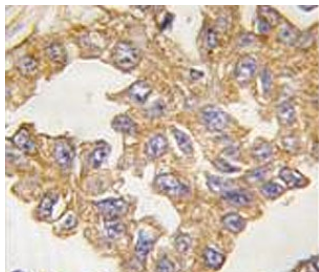
| Catalog No. | Formulation | Size |
|---------------|--|--------|
| F44293-0.4ML | In 1X PBS, pH 7.4, with 0.09% sodium azide | 0.4 ml |
| F44293-0.08ML | In 1X PBS, pH 7.4, with 0.09% sodium azide | 0.08 |

[Bulk quote request](#)

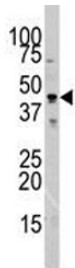
| | |
|-----------------------------|---|
| Availability | 1-3 business days |
| Species Reactivity | Human, Mouse |
| Predicted Reactivity | Bovine, C. elegans, Chicken, Drosophila, Rabbit, Rat, Xenopus, Zebrafish |
| Format | Purified |
| Host | Rabbit |
| Clonality | Polyclonal (rabbit origin) |
| Isotype | Rabbit Ig |
| Purity | Purified |
| UniProt | P68032 |
| Applications | Western Blot : 1:1000 IHC (Paraffin) : 1:10-1:50 Immunofluorescence : 1:10-1:50 |
| Limitations | This ACTC1 antibody is available for research use only. |



Confocal immunofluorescent analysis of ACTC1 antibody with HeLa cells followed by Alexa Fluor 488-conjugated goat anti-rabbit IgG (green). DAPI was used as a nuclear counterstain (blue).



IHC analysis of FFPE human lung carcinoma tissue stained with ACTC1 antibody



Western blot analysis of ACTC1 antibody and mouse testis tissue lysate. Predicted molecular weight ~42 kDa.

Description

Actins are highly conserved proteins that are involved in cell motility, structure, and integrity. ACTB/ACTC are nonmuscle cytoskeletal actins and major constituents of the contractile apparatus. Defects in ACTB are a cause of juvenile-onset dystonia. Defects in ACTC have been associated with idiopathic dilated cardiomyopathy (IDC) and familial hypertrophic cardiomyopathy (FHC).

Application Notes

Titration of the ACTC1 antibody may be required due to differences in protocols and secondary/substrate sensitivity.

Immunogen

A portion of amino acids 38-67 from the human protein was used as the immunogen for this ACTC1 antibody.

Storage

Aliquot the ACTC1 antibody and store frozen at -20°C or colder. Avoid repeated freeze-thaw cycles.