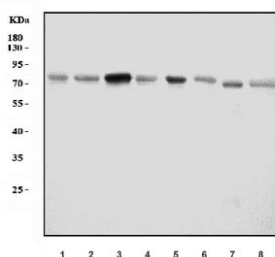


ACP2 Antibody / Lysosomal Acid Phosphatase (RQ6918)

Catalog No.	Formulation	Size
RQ6918	0.5mg/ml if reconstituted with 0.2ml sterile DI water	100 ug

Bulk quote request

Availability	1-3 business days
Species Reactivity	Human, Mouse, Rat
Format	Antigen affinity purified
Clonality	Polyclonal (rabbit origin)
Isotype	Rabbit IgG
Purity	Antigen affinity purified
Buffer	Lyophilized from 1X PBS with 2% Trehalose
UniProt	P11117
Applications	Western Blot : 0.5-1 ug/ml
Limitations	This ACP2 antibody is available for research use only.



Western blot testing of 1) human T-47D, 2) human HeLa, 3) human U-251, 4) human RT4, 5) rat liver, 6) rat pancreas, 7) mouse liver and 8) mouse pancreas tissue lysate with ACP2 antibody. Predicted molecular weight ~76 kDa.

Description

Lysosomal acid phosphatase is an enzyme that in humans is encoded by the ACP2 gene. The protein encoded by this gene belongs to the histidine acid phosphatase family, which hydrolyze orthophosphoric monoesters to alcohol and phosphate. This protein is localized to the lysosomal membrane, and is chemically and genetically distinct from the red cell acid phosphatase. Mice lacking this gene showed multiple defects, including bone structure alterations, lysosomal storage defects, and an increased tendency towards seizures. An enzymatically-inactive allele of this gene in mice showed severe growth retardation, hair-follicle abnormalities, and an ataxia-like phenotype. Alternatively spliced transcript variants have been found for this gene. A C-terminally extended isoform is also predicted to be produced by the use of an alternative in-frame translation termination codon via a stop codon readthrough mechanism.

Application Notes

Optimal dilution of the ACP2 antibody should be determined by the researcher.

Immunogen

Amino acids RSLRFVTLLYRHGDRSPVKTYPKDPYQE were used as the immunogen for the ACP2 antibody.

Storage

After reconstitution, the ACP2 antibody can be stored for up to one month at 4oC. For long-term, aliquot and store at -20oC. Avoid repeated freezing and thawing.