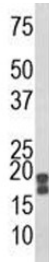


ACP1 Antibody / Acid Phosphatase (F51705)

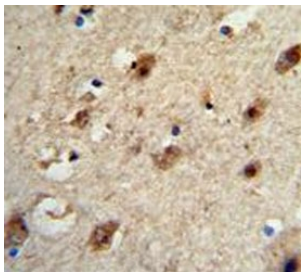
Catalog No.	Formulation	Size
F51705-0.4ML	In 1X PBS, pH 7.4, with 0.09% sodium azide	0.4 ml
F51705-0.08ML	In 1X PBS, pH 7.4, with 0.09% sodium azide	0.08 ml

[Bulk quote request](#)

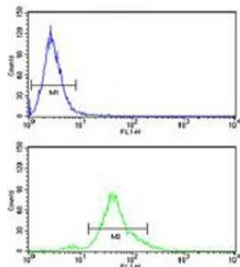
Availability	1-3 business days
Species Reactivity	Human
Format	Antigen affinity purified
Host	Rabbit
Clonality	Polyclonal (rabbit origin)
Isotype	Rabbit Ig
Purity	Antigen affinity
UniProt	P24666
Localization	Cytoplasmic, minor nuclear
Applications	Western Blot : 1:1000 IHC (Paraffin) : 1:50-1:100 Flow Cytometry : 1:10-1:50 Immunofluorescence : 1:10-1:50
Limitations	This ACP1 antibody is available for research use only.



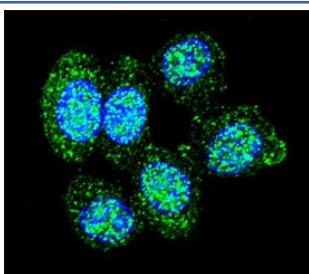
Western blot analysis of ACP1 antibody and human HeLa lysate. Predicted molecular weight 14-18 kDa (isoforms 1-3).



IHC analysis of FFPE human brain tissue stained with ACP1 antibody



ACP1 antibody flow cytometry analysis of human HeLa cells (bottom histogram) compared to a [negative control](#) (top histogram). FITC-conjugated goat-anti-rabbit secondary Ab was used for the analysis.



Confocal immunofluorescent analysis of ACP1 antibody with human HeLa cells followed by Alexa Fluor 488-conjugated goat anti-rabbit IgG (green). DAPI was used as a nuclear counterstain (blue).

Description

ACP1 belongs to the phosphotyrosine protein phosphatase family of proteins. It functions as an acid phosphatase and a protein tyrosine phosphatase by hydrolyzing protein tyrosine phosphate to protein tyrosine and orthophosphate. This enzyme also hydrolyzes orthophosphoric monoesters to alcohol and orthophosphate. This gene is genetically polymorphic, and three common alleles segregating at the corresponding locus give rise to six phenotypes. Each allele appears to encode at least two electrophoretically different isozymes, Bf and Bs, which are produced in allele-specific ratios.

Application Notes

Titration of the ACP1 antibody may be required due to differences in protocols and secondary/substrate sensitivity.

Immunogen

A portion of amino acids 33-61 from the human protein was used as the immunogen for this ACP1 antibody.

Storage

Aliquot the ACP1 antibody and store frozen at -20oC or colder. Avoid repeated freeze-thaw cycles.

