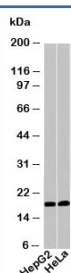


Acid Phosphatase / ACP1 Antibody (N1079)

Catalog No.	Formulation	Size
N1079-100UG	0.5 mg/ml in 1X PBS with 0.1 mg/ml BSA (US sourced), 0.05% sodium azide	100 ug
N1079-25UG	0.5 mg/ml in 1X PBS with 0.1 mg/ml BSA (US sourced), 0.05% sodium azide	25 ug

[Bulk quote request](#)

Species Reactivity	Human
Format	Purified
Clonality	Polyclonal (rabbit origin)
Isotype	Rabbit IgG
Purity	Protein A affinity chromatography
Buffer	1X PBS, pH 7.4
Gene ID	52
Applications	Western Blot : 1-3ug/ml
Limitations	This Acid Phosphatase / ACP1 antibody is available for research use only.



Western blot testing of human samples with Acid Phosphatase / ACP1 antibody at 1ug/ml.

Description

Acid phosphatases (AP) are a broad family of enzymes that differ widely in their AA length and homology, molecular weight and tissue of origin. They function to remove phosphate groups (or dephosphorylate) from proteins and perform best under acidic conditions. Disease states are sometimes characterized by abnormally high or low levels of Acid phosphatase, leading to them being used as serological and histological disease markers. Prostatic Acid Phosphatase (PAP) was initially used as a prostate cancer marker but was later replaced with Prostate Serum Antigen (PSA), a more sensitive early stage cancer marker.

Application Notes

Provided assay concentrations are suggestions only, ACP1 antibody titration may be required for optimal results.

1. This antibody will detect the A, C and D isoforms of Acid Phosphatase.

Immunogen

A recombinant protein fragment from the N-terminal portion of Acid Phosphatase / ACP1 was used as the immunogen for this antibody. This AA sequence is common to the A, C and D isoforms.

Storage

Aliquot the ACP1 antibody and store frozen at -20oC or colder. Avoid repeated freeze-thaw cycles.

Alternate Names

ACP1, Low molecular weight cytosolic acid phosphatase, Adipocyte acid phosphatase