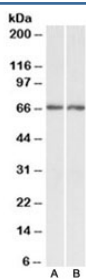


Acetylcholinesterase Antibody (R35265)

Catalog No.	Formulation	Size
R35265-100UG	0.5 mg/ml in 1X TBS, pH7.3, with 0.5% BSA (US sourced) and 0.02% sodium azide	100 ug

[Bulk quote request](#)

Availability	1-3 business days
Species Reactivity	Human
Format	Antigen affinity purified
Clonality	Polyclonal (goat origin)
Isotype	Goat Ig
Purity	Antigen affinity
Gene ID	43
Applications	Western Blot : 1-3ug/ml ELISA (peptide) LOD : 1:2000
Limitations	This Acetylcholinesterase antibody is available for research use only.



Western blot testing of human A) cerebellum and B) hippocampus lysate with Acetylcholinesterase antibody at 0.3ug/ml. Predicted molecular weight ~67kDa.

Description

Additional name(s) for this target protein: ACHE, ARACHE, N-ACHE, YT

Application Notes

Optimal dilution of the Acetylcholinesterase antibody should be determined by the researcher.

Immunogen

Amino acids QFDHYSKQDRCS DL were used as the immunogen for this Acetylcholinesterase antibody.

Storage

Aliquot and store the Acetylcholinesterase antibody at -20oC.