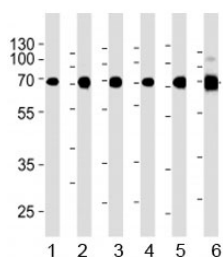


Acetylcholinesterase Antibody [clone 684CT8.3.4] (F52412)

Catalog No.	Formulation	Size
F52412-0.4ML	In 1X PBS, pH 7.4, with 0.09% sodium azide	0.4 ml
F52412-0.08ML	In 1X PBS, pH 7.4, with 0.09% sodium azide	0.08 ml

[Bulk quote request](#)

Availability	1-3 business days
Species Reactivity	Human, Mouse, Rat
Predicted Reactivity	Bovine, Rabbit
Format	Purified
Clonality	Monoclonal (mouse origin)
Isotype	Mouse IgG1
Clone Name	684CT8.3.4
Purity	Purified
UniProt	P22303
Localization	Cytoplasmic, membranous
Applications	Western Blot : 1:2000
Limitations	This Acetylcholinesterase antibody is available for research use only.



Acetylcholinesterase antibody western blot analysis in 1) human Raji, 2) human Jurkat, 3) human COS7, 4) mouse NIH3T3, 5) mouse cerebellum, and 6) rat cerebellum lysate. Predicted molecular weight ~68 kDa.

Description

Acetylcholinesterase terminates signal transduction at the neuromuscular junction by rapid hydrolysis of the acetylcholine released into the synaptic cleft. Role in neuronal apoptosis.

Application Notes

Titration of the Acetylcholinesterase antibody may be required due to differences in protocols and secondary/substrate sensitivity.

Immunogen

A portion of amino acids 587-611 from the human protein was used as the immunogen for this Acetylcholinesterase antibody.

Storage

Aliquot the Acetylcholinesterase antibody and store frozen at -20oC or colder. Avoid repeated freeze-thaw cycles.