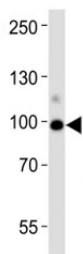


ACE2 Antibody (F49433)

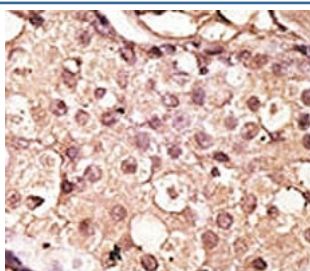
Catalog No.	Formulation	Size
F49433-0.4ML	In 1X PBS, pH 7.4, with 0.09% sodium azide	0.4 ml
F49433-0.08ML	In 1X PBS, pH 7.4, with 0.09% sodium azide	0.08 ml

[Bulk quote request](#)

Availability	1-3 business days
Species Reactivity	Human
Format	Purified
Host	Rabbit
Clonality	Polyclonal (rabbit origin)
Isotype	Rabbit Ig
Purity	Purified
UniProt	Q9BYF1
Applications	Western Blot : 1:1000 IHC (Paraffin) : 1:50-1:100 ELISA : peptide immunogen
Limitations	This ACE2 antibody is available for research use only.



Western blot analysis of lysate from human kidney tissue lysate using ACE2 antibody diluted at 1:1000. Predicted molecular weight: 90-100 kDa.



IHC analysis of FFPE human breast carcinoma tissue stained with the ACE2 antibody

Description

ACE2 is a carboxypeptidase which converts angiotensin I to angiotensin 1-9, a peptide of unknown function, and angiotensin II to angiotensin 1-7, a vasodilator. Also able to hydrolyze apelin-13 and dynorphin-13 with high efficiency. May be an important regulator of heart function. In case of human coronaviruses SARS and HCoV-NL63 infections, serve as functional receptor for the spike glycoprotein of both coronaviruses. [UniProt]

Application Notes

Titration of the ACE2 antibody may be required due to differences in protocols and secondary/substrate sensitivity.

Immunogen

A portion of amino acids 140-172 from the human protein was used as the immunogen for this ACE2 antibody.

Storage

Aliquot the ACE2 antibody and store frozen at -20oC or colder. Avoid repeated freeze-thaw cycles.