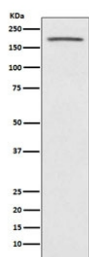


## ACE Antibody / Angiotensin-Converting Enzyme [clone ADCO-1] (RQ5388)

Catalog No.	Formulation	Size
RQ5388	Antibody in PBS with 0.02% sodium azide, 50% glycerol and 0.4-0.5mg/ml BSA	100 ul

[Bulk quote request](#)

Availability	1-2 weeks
Species Reactivity	Human, Mouse
Format	Purified
Clonality	Rabbit Monoclonal
Isotype	Rabbit IgG
Clone Name	ADCO-1
Purity	Affinity purified
UniProt	P12821
Applications	Western Blot : 1:500-1:1000
Limitations	This ACE antibody is available for research use only.



Western blot testing of human fetal kidney lysate with ACE antibody. Predicted molecular weight: 140-170 kDa.

### Description

The ACE gene encodes an enzyme involved in catalyzing the conversion of angiotensin I into a physiologically active peptide angiotensin II. Angiotensin II is a potent vasopressor and aldosterone-stimulating peptide that controls blood pressure and fluid-electrolyte balance. This enzyme plays a key role in the renin-angiotensin system. Many studies have associated the presence or absence of a 287 bp Alu repeat element in this gene with the levels of circulating enzyme or cardiovascular pathophysiologies. Multiple alternatively spliced transcript variants encoding different isoforms have been identified, and two most abundant spliced variants encode the somatic form and the testicular form, respectively, that are equally active. [RefSeq]

## **Application Notes**

Optimal dilution of the ACE antibody should be determined by the researcher.

## **Immunogen**

A synthetic peptide specific to human Angiotensin-Converting Enzyme was used as the immunogen for the ACE antibody.

## **Storage**

Store the ACE antibody at -20oC.