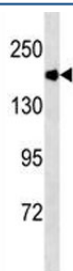


ACE Antibody [clone 536CT24.1.3] (F53690)

| Catalog No. | Formulation | Size |
|--------------|------------------------------------|--------|
| F53690-0.1ML | In ascites with 0.09% sodium azide | 0.1 ml |

Bulk quote request

| | |
|---------------------------|---|
| Availability | 1-3 business days |
| Species Reactivity | Human, Mouse |
| Format | Ascites |
| Clonality | Monoclonal (mouse origin) |
| Isotype | Mouse IgG2a |
| Clone Name | 536CT24.1.3 |
| Purity | Ascites |
| UniProt | P12821 |
| Applications | Western Blot : 1:500-1:16000 |
| Limitations | This ACE antibody is available for research use only. |



ACE antibody western blot analysis in mouse kidney tissue lysate. Expected molecular weight 140-170 kDa.

Description

This gene encodes an enzyme involved in catalyzing the conversion of angiotensin I into a physiologically active peptide angiotensin II. Angiotensin II is a potent vasopressor and aldosterone-stimulating peptide that controls blood pressure and fluid-electrolyte balance. This enzyme plays a key role in the renin-angiotensin system. Many studies have associated the presence or absence of a 287 bp Alu repeat element in this gene with the levels of circulating enzyme or cardiovascular pathophysiology. Multiple alternatively spliced transcript variants encoding different isoforms have been identified, and two most abundant spliced variants encode the somatic form and the testicular form, respectively, that are equally active.

Application Notes

Titration of the ACE antibody may be required due to differences in protocols and secondary/substrate sensitivity.

Immunogen

A portion of amino acids 1274-1306 from the human protein was used as the immunogen for this ACE antibody.

Storage

Aliquot the ACE antibody and store frozen at -20oC or colder. Avoid repeated freeze-thaw cycles.