

## ACAP2 Antibody (R33834)

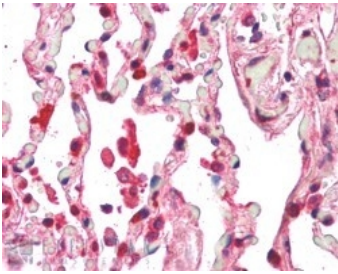
Catalog No.	Formulation	Size
R33834-100UG	0.5 mg/ml in 1X TBS, pH7.3, with 0.5% BSA (US sourced) and 0.02% sodium azide	100 ug

[Bulk quote request](#)

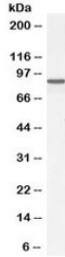
Availability	1-3 business days
Species Reactivity	Human, Mouse, Rat
Predicted Reactivity	Dog, Pig
Format	Antigen affinity purified
Host	Goat
Clonality	Polyclonal (goat origin)
Isotype	Goat Ig
Purity	Antigen affinity
Gene ID	23527
Applications	Western Blot : 0.3-1ug/ml Immunohistochemistry (FFPE) : 5-10ug/ml ELISA (peptide) LOD : 1:32000
Limitations	This ACAP2 antibody is available for research use only.



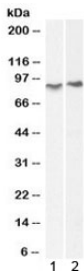
Western blot testing of human MOLT4 lysate with ACAP2 antibody at 1ug/ml. Predicted molecular weight: ~88kDa.



IHC staining of FFPE human lung with ACAP1 antibody at 5ug/ml. HIER: steamed with pH6 citrate buffer, AP-staining.



Western blot testing of mouse NIH3T3 lysate with ACAP2 antibody at 0.3ug/ml. Predicted molecular weight: ~88kDa.



Western blot testing of 1) mouse lung and 2) rat lung lysate with ACAP2 antibody at 0.3ug/ml. Predicted molecular weight: ~88kDa.

## Description

Additional name(s) for this target protein: Centaurin beta 2, CENTB2

## Application Notes

Optimal dilution of the ACAP2 antibody should be determined by the researcher.

## Immunogen

Amino acids EKLNRFAQDSQKF were used as the immunogen for this ACAP2 antibody.

## Storage

Aliquot and store the ACAP2 antibody at -20oC.