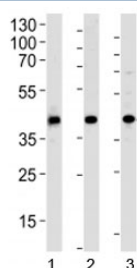


ACADL Antibody (F42746)

| Catalog No. | Formulation | Size |
|---------------|--|---------|
| F42746-0.4ML | In 1X PBS, pH 7.4, with 0.09% sodium azide | 0.4 ml |
| F42746-0.08ML | In 1X PBS, pH 7.4, with 0.09% sodium azide | 0.08 ml |

[Bulk quote request](#)

| | |
|---------------------------|---|
| Availability | 1-3 business days |
| Species Reactivity | Human, Mouse, Rat |
| Format | Antigen affinity purified |
| Clonality | Polyclonal (rabbit origin) |
| Isotype | Rabbit Ig |
| Purity | Antigen affinity |
| UniProt | P28330 |
| Localization | Cytoplasmic |
| Applications | Western Blot : 1:500-1000 |
| Limitations | This ACADL antibody is available for research use only. |



Western blot analysis of 1) human HepG2, 2) mouse kidney and 3) rat spleen tissue lysate using ACADL antibody at 1:1000. Predicted molecular weight ~48 kDa.

Description

Long-chain specific acyl-CoA dehydrogenase, mitochondrial belongs to the acyl-CoA dehydrogenase family, which is a family of mitochondrial flavoenzymes involved in fatty acid and branched chain amino-acid metabolism. This protein is one of the four enzymes that catalyze the initial step of mitochondrial beta-oxidation of straight-chain fatty acid. Defects in this gene are the cause of long-chain acyl-CoA dehydrogenase (LCAD) deficiency, leading to nonketotic hypoglycemia.

Application Notes

Titration of the ACADL antibody may be required due to differences in protocols and secondary/substrate sensitivity.

Immunogen

A portion of amino acids 14-43 from the human protein was used as the immunogen for this ACADL antibody.

Storage

Aliquot the ACADL antibody and store frozen at -20oC or colder. Avoid repeated freeze-thaw cycles.