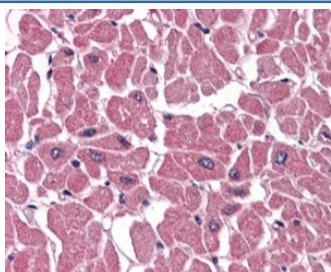


## ABTB1 Antibody (R35534)

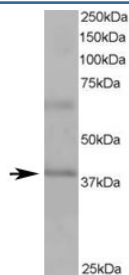
Catalog No.	Formulation	Size
R35534-100UG	0.5 mg/ml in 1X TBS, pH7.3, with 0.5% BSA (US sourced) and 0.02% sodium azide	100 ug

[Bulk quote request](#)

Availability	1-3 business days
Species Reactivity	Human
Predicted Reactivity	Mouse, Rat, Dog
Format	Antigen affinity purified
Host	Goat
Clonality	Polyclonal (goat origin)
Isotype	Goat Ig
Purity	Antigen affinity
Gene ID	80325
Applications	Western Blot : 1-3ug/ml Immunohistochemistry (FFPE) : 3-5ug/ml ELISA (peptide) LOD : 1:32000
Limitations	This ABTB1 antibody is available for research use only.



IHC staining of FFPE human heart with ABTB1 antibody at 4ug/ml. HIER: steamed with pH6 citrate buffer, AP-staining.



Western blot testing of human heart lysate with ABTB1 antibody at 1ug/ml. Predicted molecular weight ~38/54 kDa (isoforms 1/2).

## Description

Additional name(s) for this target protein: Ankyrin repeat and BTB (POZ) domain containing 1, BPOZ

## Application Notes

Optimal dilution of the ABTB1 antibody should be determined by the researcher.

## Immunogen

Amino acids RALEDLLVSI~~G~~LDC were used as the immunogen for this ABTB1 antibody.

## Storage

Aliquot and store the ABTB1 antibody at -20oC.