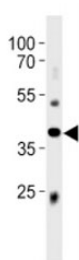


## Abi3 Antibody (F52350)

Catalog No.	Formulation	Size
F52350-0.4ML	In 1X PBS, pH 7.4, with 0.09% sodium azide	0.4 ml
F52350-0.08ML	In 1X PBS, pH 7.4, with 0.09% sodium azide	0.08 ml

[Bulk quote request](#)

<b>Availability</b>	1-3 business days
<b>Species Reactivity</b>	Mouse
<b>Format</b>	Antigen affinity purified
<b>Clonality</b>	Polyclonal (rabbit origin)
<b>Isotype</b>	Rabbit Ig
<b>Purity</b>	Antigen affinity
<b>UniProt</b>	Q8BYZ1
<b>Applications</b>	Western Blot : 1:1000
<b>Limitations</b>	This Abi3 antibody is available for research use only.



Abi3 antibody western blot analysis in mouse liver tissue lysate. Predicted molecular weight ~39 kDa.

## Description

ABI gene family member 3 inhibits ectopic tumor cell metastasis of SRD cells. In vitro, reduces cell motility.

## Application Notes

Titration of the Abi3 antibody may be required due to differences in protocols and secondary/substrate sensitivity.

## Immunogen

This mouse Abi3 antibody was produced from rabbits immunized with a KLH conjugated synthetic peptide between 300-329 amino acids from the C-terminal region of mouse Abi3.

## Storage

Aliquot the Abi3 antibody and store frozen at -20oC or colder. Avoid repeated freeze-thaw cycles.