

ABI2 Antibody / Abelson interactor 2 (F42290)

Catalog No.	Formulation	Size
F42290-0.4ML	In 1X PBS, pH 7.4, with 0.09% sodium azide	0.4 ml
F42290-0.08ML	In 1X PBS, pH 7.4, with 0.09% sodium azide	0.08 ml

Bulk quote request

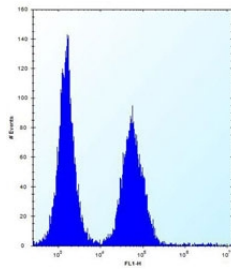
Availability	1-3 business days
Species Reactivity	Human, Mouse
Format	Antigen affinity purified
Clonality	Polyclonal (rabbit origin)
Isotype	Rabbit Ig
Purity	Antigen affinity
UniProt	Q9NYB9
Applications	Western Blot : 1:1000 Flow Cytometry : 1:10-1:50
Limitations	This ABI2 antibody is available for research use only.

72
55
36
28

ABI2 antibody western blot analysis in mouse heart tissue lysate. Predicted molecular weight ~55 kDa.

95
72
55
36
28
17

ABI2 antibody western blot analysis in Jurkat lysate. Predicted molecular weight ~55 kDa.



ABI2 antibody flow cytometric analysis (intracellular) of Jurkat cells (right histogram) compared to a [negative control](#) (left histogram). FITC-conjugated donkey-anti-rabbit secondary Ab was used for the analysis.

Description

ABI2 may act in regulation of cell growth and transformation by interacting with nonreceptor tyrosine kinases ABL1 and/or ABL2. May be involved in cytoskeletal reorganization. Regulates ABL1/c-Abl-mediated phosphorylation of MENA.

Application Notes

Titration of the ABI2 antibody may be required due to differences in protocols and secondary/substrate sensitivity.

Immunogen

A portion of amino acids 1-30 from the human protein was used as the immunogen for this ABI2 antibody.

Storage

Aliquot the ABI2 antibody and store frozen at -20oC or colder. Avoid repeated freeze-thaw cycles.