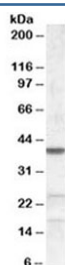


ABHD5 Antibody (R34062)

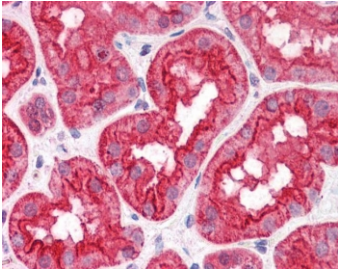
Catalog No.	Formulation	Size
R34062-100UG	0.5 mg/ml in 1X TBS, pH7.3, with 0.5% BSA (US sourced) and 0.02% sodium azide	100 ug

[Bulk quote request](#)

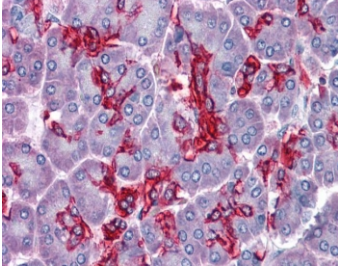
Availability	1-3 business days
Species Reactivity	Human. Mouse
Predicted Reactivity	Rat, Dog, Cow
Format	Antigen affinity purified
Host	Goat
Clonality	Polyclonal (goat origin)
Isotype	Goat Ig
Purity	Antigen affinity
Gene ID	51099
Localization	Cytoplasmic
Applications	Western Blot : 0.2-0.6ug/ml IHC (FFPE) : 3.75ug/ml ELISA (peptide) LOD : 1:16000
Limitations	This ABHD5 antibody is available for research use only.



Western blot testing of NIH3T3 lysate with ABHD5 antibody at 0.2ug/ml. Predicted molecular weight: ~39 kDa.



IHC testing of FFPE human kidney tissue with ABHD5 antibody at 3.75ug/ml. Required HIER: steamed antigen retrieval with pH6 citrate buffer; AP-staining.



IHC testing of FFPE human pancreas tissue with ABHD5 antibody at 3.75ug/ml. Required HIER: steamed antigen retrieval with pH6 citrate buffer; AP-staining.

Description

Additional name(s) for this target protein: CGI58, IECN2, NCIE2

Application Notes

Optimal dilution of the ABHD5 antibody should be determined by the researcher.

1. This ABHD5 antibody does not cross react with ABHD4.

Immunogen

Amino acids FPERPDLADQDR were used as the immunogen for this ABHD5 antibody.

Storage

Aliquot and store the ABHD5 antibody at -20oC.