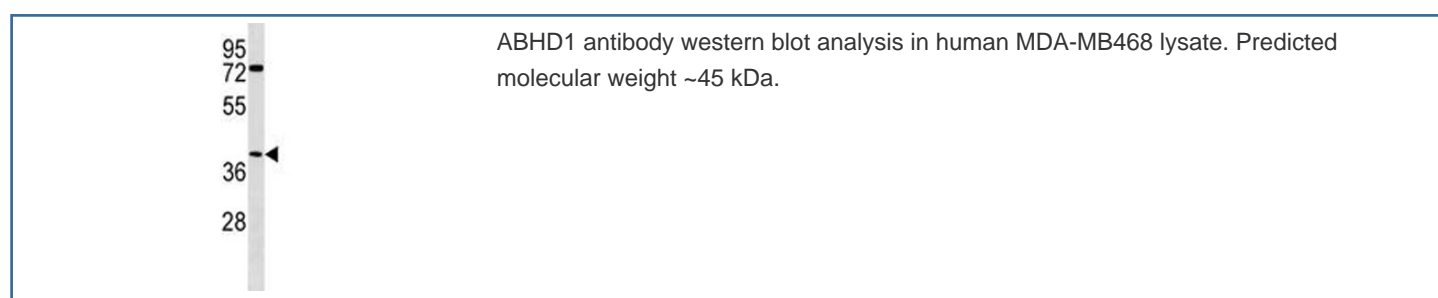


## ABHD1 Antibody (F46564)

Catalog No.	Formulation	Size
F46564-0.4ML	In 1X PBS, pH 7.4, with 0.09% sodium azide	0.4 ml
F46564-0.08ML	In 1X PBS, pH 7.4, with 0.09% sodium azide	0.08 ml

[Bulk quote request](#)

<b>Availability</b>	1-3 business days
<b>Species Reactivity</b>	Human
<b>Format</b>	Antigen affinity purified
<b>Clonality</b>	Polyclonal (rabbit origin)
<b>Isotype</b>	Rabbit Ig
<b>Purity</b>	Antigen affinity
<b>UniProt</b>	Q96SE0
<b>Applications</b>	Western Blot : 1:1000
<b>Limitations</b>	This ABHD1 antibody is available for research use only.



## Description

Abhydrolase domain-containing protein 1 is a member of the AB hydrolase superfamily and encodes a protein with an alpha/beta hydrolase fold. This domain is common to a number of hydrolytic enzymes of widely differing phylogenetic origins and catalytic functions.

## Application Notes

Titration of the ABHD1 antibody may be required due to differences in protocols and secondary/substrate sensitivity.

## Immunogen

A portion of amino acids 289-315 from the human protein was used as the immunogen for this ABHD1 antibody.

## **Storage**

Aliquot the ABHD1 antibody and store frozen at -20oC or colder. Avoid repeated freeze-thaw cycles.