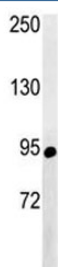


ABCF1 Antibody (F51628)

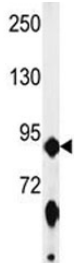
Catalog No.	Formulation	Size
F51628-0.4ML	In 1X PBS, pH 7.4, with 0.09% sodium azide	0.4 ml
F51628-0.08ML	In 1X PBS, pH 7.4, with 0.09% sodium azide	0.08 ml

[Bulk quote request](#)

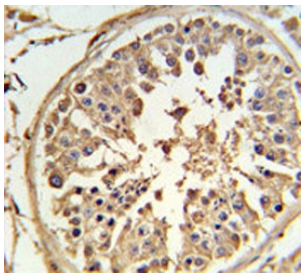
Availability	1-3 business days
Species Reactivity	Human, Mouse
Predicted Reactivity	Pig
Format	Antigen affinity purified
Clonality	Polyclonal (rabbit origin)
Isotype	Rabbit Ig
Purity	Antigen affinity
UniProt	Q8NE71
Localization	Cytoplasmic
Applications	Western Blot : 1:1000 IHC (Paraffin) : 1:50-1:100
Limitations	This ABCF1 antibody is available for research use only.



Western blot analysis of ABCF1 antibody and NCI-H460 lysate. Predicted molecular weight ~96 kDa.



Western blot analysis of ABCF1 antibody and mouse NIH3T3 lysate. Predicted molecular weight ~96 kDa.



ABCF1 antibody IHC analysis in formalin fixed and paraffin embedded human testis tissue.

Description

The protein is a member of the superfamily of ATP-binding cassette (ABC) transporters. ABC proteins transport various molecules across extra- and intra-cellular membranes. ABC proteins are divided into seven distinct subfamilies (ABC1, MDR/TAP, MRP, ALD, OABP, GCN20, White). This protein is a member of the GCN20 subfamily. Unlike other members of the superfamily, this protein lacks the transmembrane domains which are characteristic of most ABC transporters. This protein may be regulated by tumor necrosis factor- α and play a role in enhancement of protein synthesis and the inflammation process.

Application Notes

Titration of the ABCF1 antibody may be required due to differences in protocols and secondary/substrate sensitivity.

Immunogen

A portion of amino acids 687-716 from the human protein was used as the immunogen for this ABCF1 antibody.

Storage

Aliquot the ABCF1 antibody and store frozen at -20°C or colder. Avoid repeated freeze-thaw cycles.