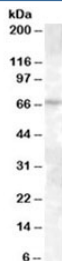


## ABCE1 Antibody (R34523)

Catalog No.	Formulation	Size
R34523-100UG	0.5 mg/ml in 1X TBS, pH7.3, with 0.5% BSA (US sourced) and 0.02% sodium azide	100 ug

[Bulk quote request](#)

Availability	1-3 business days
Species Reactivity	Human
Predicted Reactivity	Cow, Dog, Mouse, Rat
Format	Antigen affinity purified
Host	Goat
Clonality	Polyclonal (goat origin)
Isotype	Goat Ig
Purity	Antigen affinity
Gene ID	6059
Applications	Western Blot : 0.3-1ug/ml ELISA (peptide) LOD : 1:8000
Limitations	This ABCE1 antibody is available for research use only.



Western blot testing of A431 lysate with ABCE1 antibody at 0.3ug/ml. Predicted molecular weight: ~68kDa.

## Description

Additional name(s) for this target protein: ATP-binding cassette, sub-family E, member 1, RNase L inhibitor

## Application Notes

Optimal dilution of the ABCE1 antibody should be determined by the researcher.

## Immunogen

Amino acids KLNSIKDVEQKK were used as the immunogen for this ABCE1 antibody.

## Storage

Aliquot and store the ABCE1 antibody at -20oC.