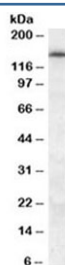


## ABCC5 Antibody (R34373)

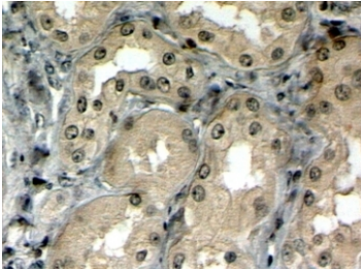
Catalog No.	Formulation	Size
R34373-100UG	0.5 mg/ml in 1X TBS, pH7.3, with 0.5% BSA (US sourced) and 0.02% sodium azide	100 ug

[Bulk quote request](#)

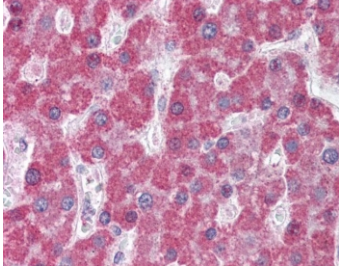
Availability	1-3 business days
Species Reactivity	Human
Predicted Reactivity	Mouse, Rat, Dog, Pig, Cow
Format	Antigen affinity purified
Host	Goat
Clonality	Polyclonal (goat origin)
Isotype	Goat Ig
Purity	Antigen affinity
UniProt	O15440
Gene ID	10057
Localization	Cytoplasmic
Applications	Western Blot : 0.5-1.5ug/ml Immunohistochemistry (FFPE) : 4-6ug/ml ELISA (peptide) LOD : 1:32000
Limitations	This ABCC5 antibody is available for research use only.



Western blot testing of human frontal cortex lysate with ABCC5 antibody at 0.5ug/ml.  
Predicted molecular weight: isoforms mayb be observed at ~23 kDa and 155-160 kDa.



IHC staining of FFPE human kidney with ABCC5 antibody at 4ug/ml. HIER: steamed with pH6 citrate buffer, HRP-staining. Similar results with antigen retrieval at pH9.



IHC testing of FFPE human liver tissue with ABCC5 antibody at 5ug/ml. Required HIER: steamed antigen retrieval with pH6 citrate buffer; AP-staining.

## Description

Additional name(s) for this target protein: ATP-binding cassette, sub-family C (CFTR/MRP), member 5, MOATC, MRP5

## Application Notes

Optimal dilution of the ABCC5 antibody should be determined by the researcher.

## Immunogen

Amino acids KDIDIGKEYIIP were used as the immunogen for this ABCC5 antibody.

## Storage

Aliquot and store the ABCC5 antibody at -20oC.