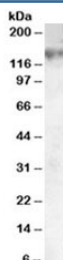


## ABCC1 Antibody / MRP1 (R34260)

Catalog No.	Formulation	Size
R34260-100UG	0.5 mg/ml in 1X TBS, pH7.3, with 0.5% BSA (US sourced) and 0.02% sodium azide	100 ug

[Bulk quote request](#)

Availability	1-3 business days
Species Reactivity	Human
Predicted Reactivity	Mouse, Rat, Dog, Pig, Cow
Format	Antigen affinity purified
Host	Goat
Clonality	Polyclonal (goat origin)
Isotype	Goat Ig
Purity	Antigen affinity
Gene ID	4363
Localization	Cytoplasmic and cell surface
Applications	Western Blot : 0.05-0.2ug/ml ELISA (peptide) LOD : 1:128000
Limitations	This ABCC1 antibody is available for research use only.



Western blot testing of A549 lysate with ABCC1 antibody at 0.05ug/ml. Predicted molecular weight: 152-172 kDa (multiple isoforms), can be observed at ~190 kDa.

## Description

Additional name(s) for this target protein: ATP-binding cassette, sub-family C (CFTR/MRP), member 1; Multidrug resistance protein 1

## Application Notes

Optimal dilution of the ABCC1 antibody should be determined by the researcher.

## Immunogen

Amino acids HQSDLKVDENQKAYY were used as the immunogen for this ABCC1 antibody.

## Storage

Aliquot and store the ABCC1 antibody at -20oC.