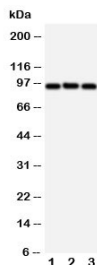


ABCB6 Antibody (R30813)

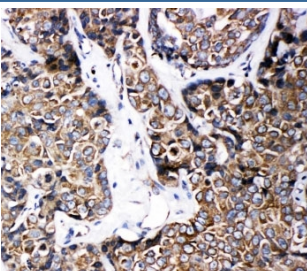
Catalog No.	Formulation	Size
R30813	0.5mg/ml if reconstituted with 0.2ml sterile DI water	100 ug

[Bulk quote request](#)

Availability	1-3 business days
Species Reactivity	Human
Format	Antigen affinity purified
Host	Rabbit
Clonality	Polyclonal (rabbit origin)
Isotype	Rabbit IgG
Purity	Antigen affinity
Buffer	Lyophilized from 1X PBS with 2.5% BSA and 0.025% sodium azide/thimerosal
UniProt	Q9NP58
Applications	Western Blot : 0.5-1ug/ml IHC (FFPE) : 0.5-1ug/ml Immunocytochemistry : 0.5-1ug/ml
Limitations	This ABCB6 antibody is available for research use only.



Western blot testing of ABCB6 antibody and Lane 1: HeLa; 2: MCF-7; 3: A549 cell lysate. Predicted size: 94KD.



IHC-P: ABCB6 antibody testing of human breast cancer tissue

Description

ATP-binding cassette sub-family B member 6, mitochondrial is a protein that in humans is encoded by the ABCB6 gene. The membrane-associated protein encoded by this gene is a member of the superfamily of ATP-binding cassette (ABC) transporters. ABC proteins transport various molecules across extra- and intra-cellular membranes. ABC genes are divided into seven distinct subfamilies (ABC1, MDR/TAP, MRP, ALD, OABP, GCN20, White). This protein is a member of the MDR/TAP subfamily. Members of the MDR/TAP subfamily are involved in multidrug resistance as well as antigen presentation. This half-transporter likely plays a role in mitochondrial function. Localized to 2q26, this gene is considered a candidate gene for lethal neonatal metabolic syndrome, a disorder of mitochondrial function.

Application Notes

The stated application concentrations are suggested starting amounts. Titration of the ABCB6 antibody may be required due to differences in protocols and secondary/substrate sensitivity.

Immunogen

An amino acid sequence from the C-terminus of human ABCB6 (YADMWQLQQGQEETSEDTKPQTMER) was used as the immunogen for this ABCB6 antibody.

Storage

After reconstitution, the ABCB6 antibody can be stored for up to one month at 4°C. For long-term, aliquot and store at -20°C. Avoid repeated freezing and thawing.