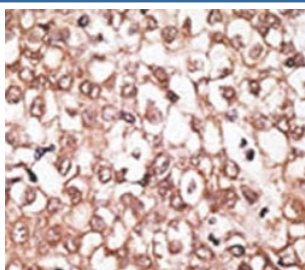


ABCB11 Antibody (F49436)

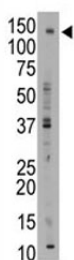
Catalog No.	Formulation	Size
F49436-0.4ML	In 1X PBS, pH 7.4, with 0.09% sodium azide	0.4 ml
F49436-0.08ML	In 1X PBS, pH 7.4, with 0.09% sodium azide	0.08 ml

[Bulk quote request](#)

Availability	1-3 business days
Species Reactivity	Human, Mouse
Format	Purified
Host	Rabbit
Clonality	Polyclonal (rabbit origin)
Isotype	Rabbit Ig
Purity	Purified
UniProt	O95342
Applications	Western Blot : 1:1000 IHC (Paraffin) : 1:50-1:100
Limitations	This ABCB11 antibody is available for research use only.



IHC analysis of FFPE human hepatocarcinoma tissue stained with the ABCB11 antibody



ABCB11 antibody western blot analysis with mouse liver tissue lysate

Description

ABCB11 is involved in the ATP-dependent secretion of bile salts into the canaliculus of hepatocytes. It is expressed predominately, if not exclusively, in the liver, where it is further localized to the canilicular microvilli and to subcanilicular vesicles fo the hepatocytes. Structurally, ABCB11 is a multifunctional polypeptide with two homologus halves, each containing a hydrophobic membrane-anchoring domain and an ATP binding cassette (ABC) domain. Defects in ABCB11 are the cause of progressive familial intrahepatic cholestasis 2 (PFIC2). PFIC2 is an inherited liver disease of childhood which is characterized by cholestasis and normal serum gamma-glutamyltransferase activity. Defects in ABCB11 are also found in cases of chronic intrahepatic cholestasis without obvious familial history of chronic liver disease.

Application Notes

Titration of the ABCB11 antibody may be required due to differences in protocols and secondary/substrate sensitivity.

Immunogen

A portion of amino acids 1038-1067 from the human protein was used as the immunogen for this ABCB11 antibody.

Storage

Aliquot the ABCB11 antibody and store frozen at -20oC or colder. Avoid repeated freeze-thaw cycles.