

ABCB10 Antibody (F49435)

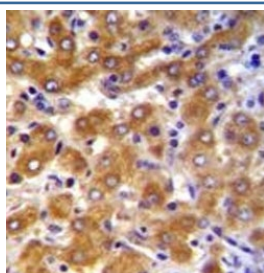
Catalog No.	Formulation	Size
F49435-0.4ML	In 1X PBS, pH 7.4, with 0.09% sodium azide	0.4 ml
F49435-0.08ML	In 1X PBS, pH 7.4, with 0.09% sodium azide	0.08 ml

[Bulk quote request](#)

Availability	1-3 business days
Species Reactivity	Human
Format	Antigen affinity purified
Clonality	Polyclonal (rabbit origin)
Isotype	Rabbit Ig
Purity	Antigen affinity
UniProt	Q9NRK6
Localization	Cytoplasmic
Applications	Western Blot : 1:1000-1:2000 IHC (Paraffin) : 1:10-1:50
Limitations	This ABCB10 antibody is available for research use only.

250
130
95
72

ABCB10 antibody western blot analysis in MCF-7 lysate. Expected molecular weight: ~79 kDa (full).



ABCB10 antibody immunohistochemistry analysis in formalin fixed and paraffin embedded human liver tissue.

Description

The membrane-associated protein ABCB10 is a member of the superfamily of ATP-binding cassette (ABC) transporters. ABC proteins transport various molecules across extra- and intra-cellular membranes. ABC genes are divided into seven distinct subfamilies (ABC1, MDR/TAP, MRP, ALD, OABP, GCN20, White). This protein is a member of the MDR/TAP subfamily. Members of the MDR/TAP subfamily are involved in multidrug resistance. The function of this mitochondrial protein is unknown.

Application Notes

Titration of the ABCB10 antibody may be required due to differences in protocols and secondary/substrate sensitivity.

Immunogen

A portion of amino acids 1-27 from the human protein was used as the immunogen for this ABCB10 antibody.

Storage

Aliquot the ABCB10 antibody and store frozen at -20oC or colder. Avoid repeated freeze-thaw cycles.