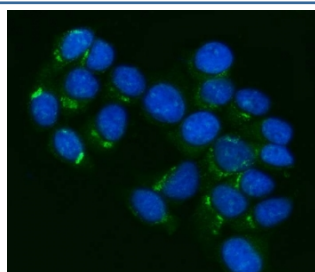


## ABCB1 Antibody / P Glycoprotein / MDR1 (RQ6755)

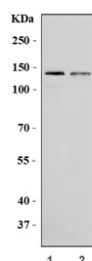
Catalog No.	Formulation	Size
RQ6755	0.5mg/ml if reconstituted with 0.2ml sterile DI water	100 ug

**Bulk quote request**

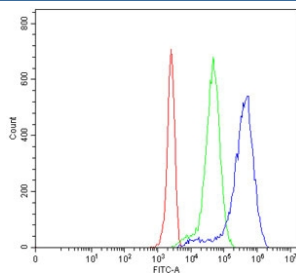
<b>Availability</b>	1-3 business days
<b>Species Reactivity</b>	Human
<b>Format</b>	Antigen affinity purified
<b>Host</b>	Rabbit
<b>Clonality</b>	Polyclonal (rabbit origin)
<b>Isotype</b>	Rabbit IgG
<b>Purity</b>	Antigen affinity purified
<b>Buffer</b>	Lyophilized from 1X PBS with 2% Trehalose
<b>UniProt</b>	P08183
<b>Applications</b>	Western Blot : 1-2ug/ml Immunofluorescence (FFPE) : 5ug/ml Flow Cytometry : 1-3ug/million cells
<b>Limitations</b>	This ABCB1 antibody is available for research use only.



Immunofluorescent staining of FFPE human MCF7 cells with ABCB1 antibody (green) and DAPI nuclear stain (blue). HIER: steam section in pH6 citrate buffer for 20 min.



Western blot testing of human 1) HepG2 and 2) Caco-2 cell lysate with ABCB1 antibody. Expected molecular weight: 141-180 kDa depending on glycosylation level.



Flow cytometry testing of human 293T cells with ABCB1 antibody at 1ug/million cells (blocked with goat sera); Red=cells alone, Green=isotype control, Blue= ABCB1 antibody.

## Description

P-GP, also called ABCB1, MDR1 and PGY1, is a glycoprotein that in humans is encoded by the ABCB1 gene. It is mapped to 7q21.12. P-GP is a well-characterized ABC-transporter (which transports a wide variety of substrates across extra- and intracellular membranes) of the MDR/TAP subfamily. It is an important protein of the cell membrane that pumps many foreign substances out of cells. More formally, it is an ATP-dependent drug efflux pump with broad substrate specificity. P-GP is an ATP-dependent drug efflux pump for xenobiotic compounds with broad substrate specificity. It is responsible for decreased drug accumulation in multidrug-resistant cells and often mediates the development of resistance to anticancer drugs. This protein also functions as a transporter in the blood-brain barrier.

## Application Notes

Optimal dilution of the ABCB1 antibody should be determined by the researcher.

## Immunogen

Amino acids TKEALDESIPPVSFWRIMK from the human protein were used as the immunogen for the ABCB1 antibody.

## Storage

After reconstitution, the ABCB1 antibody can be stored for up to one month at 4°C. For long-term, aliquot and store at -20°C. Avoid repeated freezing and thawing.