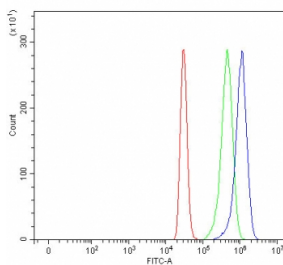


AADACL1 Antibody / Arylacetamide deacetylase-like 1 / NCEH1 (RQ8227)

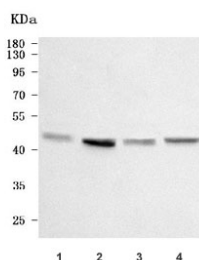
Catalog No.	Formulation	Size
RQ8227	0.5mg/ml if reconstituted with 0.2ml sterile DI water	100 ug

[Bulk quote request](#)

Availability	1-3 business days
Species Reactivity	Human
Format	Antigen affinity purified
Host	Rabbit
Clonality	Polyclonal (rabbit origin)
Isotype	Rabbit IgG
Purity	Antigen affinity purified
Buffer	Lyophilized from 1X PBS with 2% Trehalose
UniProt	Q6PIU2
Applications	Western Blot : 0.5-1ug/ml Flow Cytometry : 1-3ug/million cells Direct ELISA : 0.1-0.5ug/ml
Limitations	This AADACL1 antibody is available for research use only.



Flow cytometry testing of fixed and permeabilized human HepG2 cells with AADACL1 antibody at 1ug/million cells (blocked with goat sera); Red=cells alone, Green=isotype control, Blue= AADACL1 antibody.



Western blot testing of human 1) A431, 2) PC-3, 3) SiHa and 4) A549 cell lysate with AADACL1 antibody. Predicted molecular weight ~46 kDa.

Description

Neutral cholesterol ester hydrolase 1 (NCEH), also known as arylacetamide deacetylase-like 1 (AADACL1) or KIAA1363, is an enzyme that in humans is encoded by the NCEH1 gene. Predicted to enable hydrolase activity. Predicted to be involved in ether lipid metabolic process. Predicted to act upstream of or within SMAD protein signal transduction; protein dephosphorylation; and xenobiotic metabolic process. Located in membrane.

Application Notes

Optimal dilution of the AADACL1 antibody should be determined by the researcher.

Immunogen

E. coli-derived recombinant human protein (amino acids Q44-D352) was used as the immunogen for the AADACL1 antibody.

Storage

After reconstitution, the AADACL1 antibody can be stored for up to one month at 4oC. For long-term, aliquot and store at -20oC. Avoid repeated freezing and thawing.